

NATIONAL
**CATHOLIC
EDUCATION**
COMMISSION

ANNUAL
REPORT

2015

In 2014, Catholic school parents paid **\$3.1 billion** in fees to support their children's education



In 2014, governments provided **\$7.5 billion** in funding to support students in Catholic schools

To meet growing demand, **more than 70 new Catholic schools** are planned for the next five years



In 2016, **764,000** students attend **1,731 Catholic schools**, which employ more than **91,000** staff

Catholic schools have been part of Australia's education story for **200 years**

Catholic education provides a **balanced and holistic education**



Catholic schools are committed to **creating safe environments** for all students, teachers and families

2015

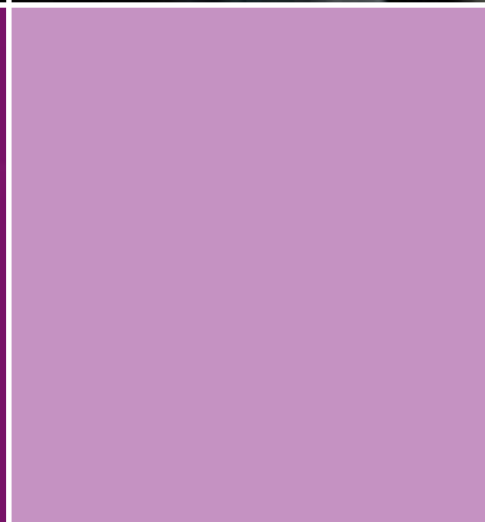
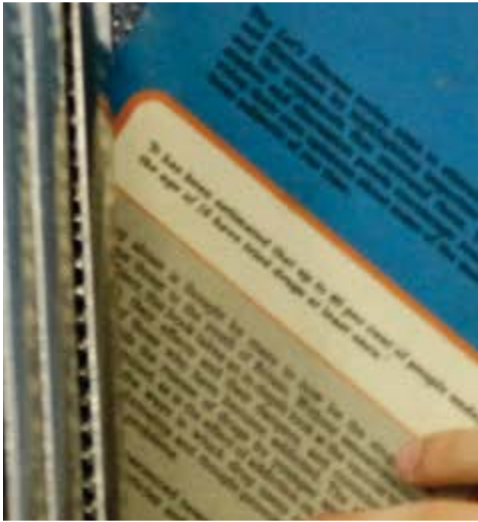
ANNUAL
REPORT



Published by: **National Catholic Education Commission**
Office address: Level 3, 156 Gloucester St, Sydney, NSW 2000
Postal address: PO Box R1802, Royal Exchange, NSW, 1225
Telephone: (02) 8229 0800
Website: www.ncec.catholic.edu.au

ISSN: 0157-1214 (print)
1836-8581 (online)

Design & Print: theLMent.com



Catholic schools
have been part
of Australia's
education story for
200
years



Level 3,
156 Gloucester St,
Sydney, NSW 2000
PO Box R1802,
Royal Exchange,
NSW 1225

Most Rev Timothy Costelloe SDB
Chairman
Bishops Commission for Catholic Education
PO Box R1802
ROYAL EXCHANGE NSW 1225

Dear Archbishop Costelloe

I am pleased to present the Annual Report for 2015 on the work of the National Catholic Education Commission.

2015 marked a high point in the growth of Catholic education in Australia, with 14 new schools opening across the country – the largest such increase in at least 25 years. With 1,728 schools now educating more than 760,000 students nationwide, it is difficult to imagine Australian education without the contribution of Catholic schools.

With the new NCEC secretariat in its Church Hill offices in Sydney enjoying its first full year in operation, the Commission's work in a range of areas, including political advocacy, policy development, stakeholder engagement, data analysis and communications, helped to shape Catholic education's advocacy at the national level.

The NCEC and Catholic education more broadly continued to be a key contributor to the educational debate in Australia and worked diligently through its advocacy to inform and engage with federal parliamentarians and governmental leaders.

On behalf of the NCEC, I would like to thank you, and through you the Bishops Commission for Catholic Education, for your ongoing encouragement and support of the Commission's work.

In a special way, we thank Bishop Gerard Holohan and Bishop James Foley for their work as long-time contributors to and stewards of the NCEC and the BCCE, having completed their terms on both groups in 2015. We welcome the appointments of Archbishop Anthony Fisher OP and Bishop Mark Edwards OMI to the BCCE during 2015 and look forward to their wisdom helping shape the vast ministry of Catholic education.

As we continue to support the education of students in our Catholic schools, we are inspired by the words of Pope Francis: "Education cannot be neutral. It is either positive or negative; either it enriches or it impoverishes; either it enables a person to grow or it lessens, even corrupts him. The mission of schools is to develop a sense of truth, of what is good and beautiful."

Yours sincerely

A handwritten signature in blue ink, appearing to read "Greg Crafter". The signature is fluid and cursive, written in a professional style.

The Hon Greg Crafter AO
Chair
July 2016

In 2016,
764,000
students attend
1,731 Catholic
schools, which
employ more
than **91,000 staff**

vi



Contents

Bishops Commission for Catholic Education	2
Role of the National Catholic Education Commission	3
Membership of the NCEC	4
Membership of the NCEC Secretariat	5
Report on NCEC activities	6
NCEC meetings	6
Major agenda items for the NCEC in 2015	7
Standing committees and working parties	12-13
Representation on national bodies	14
Summary statistics	17
Financial report for the year ended 31 December 2015	29
Appendices	51
NCEC terms of reference and statutes	52
Directory of Catholic Education Commissions	54

The NCEC gratefully acknowledges the assistance of Brisbane Catholic Education for allowing the use of photographs for the cover and throughout this report.

Bishops Commission for Catholic Education

The National Catholic Education Commission (NCEC) is responsible to the Australian Catholic Bishops Conference (ACBC) through the Bishops Commission for Catholic Education (BCCE).

Members of the BCCE until May 2015 were:

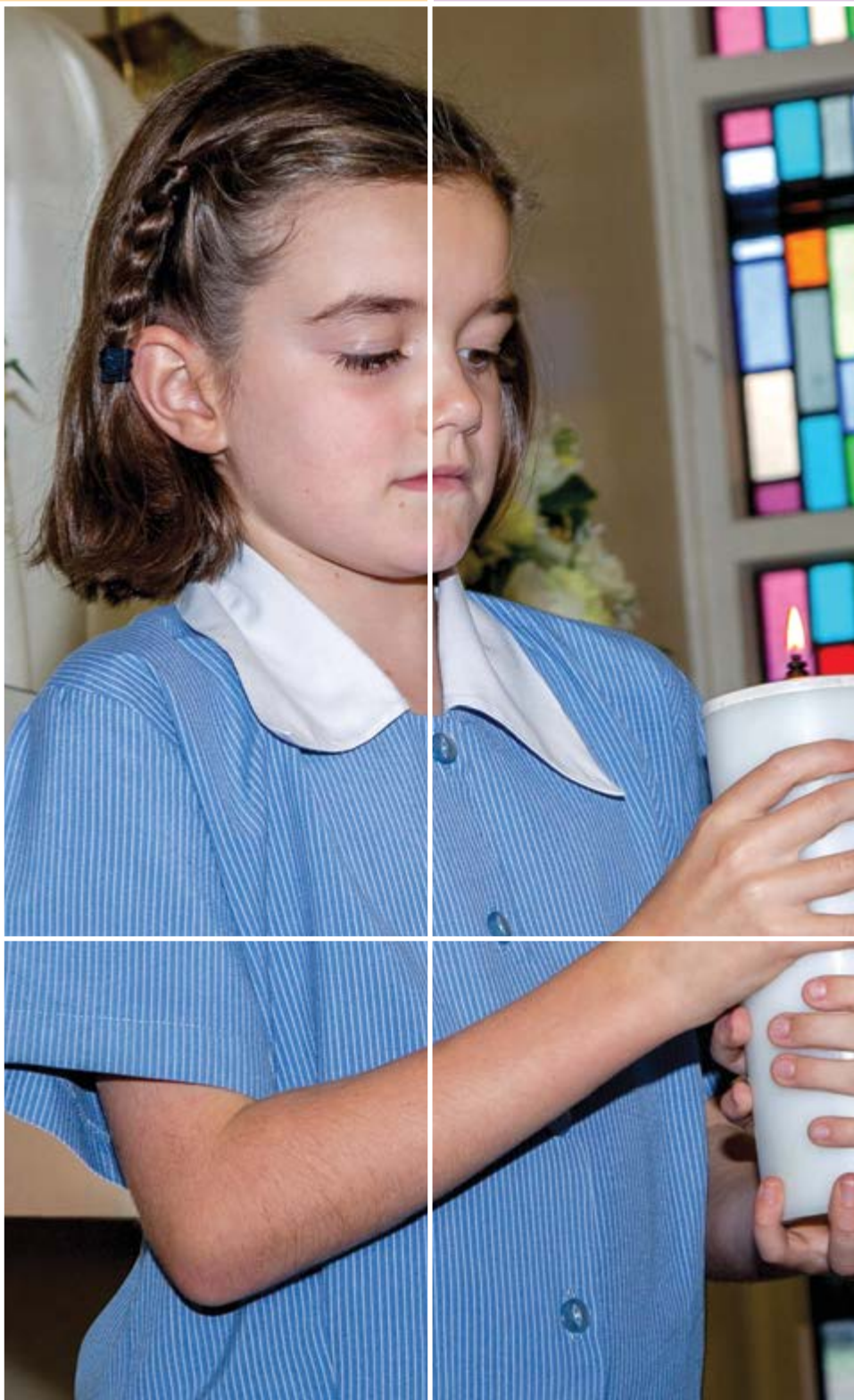
- Most Rev. Gregory O’Kelly SJ, AM, Bishop of Port Pirie - Chairman
- Most Rev. Tim Costelloe SDB, Archbishop of Perth
- Most Rev. James Foley, Bishop of Cairns
- Most Rev. Gerard Holohan, Bishop of Bunbury

Members of the BCCE from May 2015 were:

- Most Rev. Tim Costelloe SDB, Archbishop of Perth - Chairman
- Most Rev. Mark Edwards OMI, Auxiliary Bishop of Melbourne
- Most Rev. Anthony Fisher OP, Archbishop of Sydney
- Most Rev. Gregory O’Kelly SJ, AM, Bishop of Port Pirie

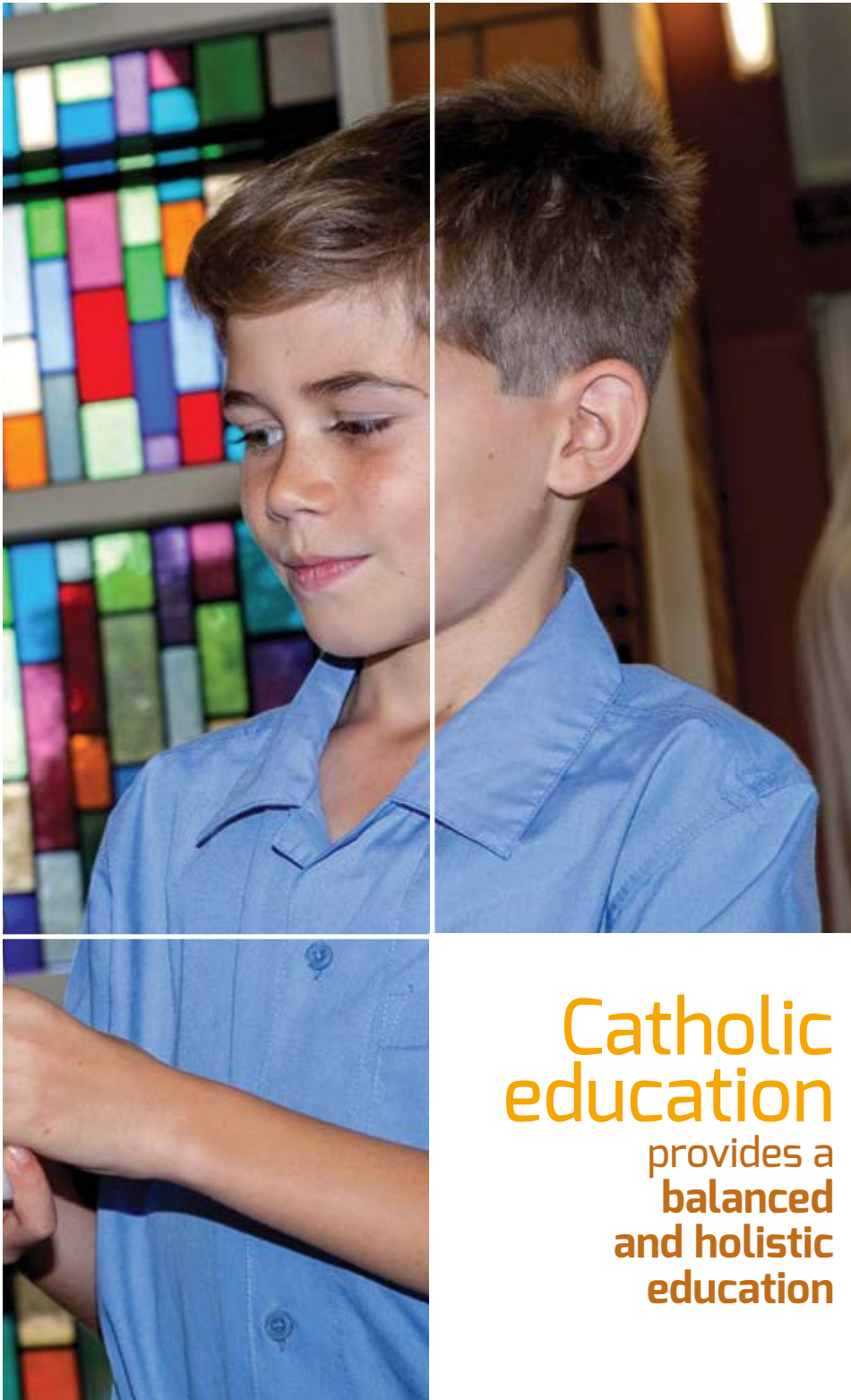
The BCCE met on five occasions in 2015. It reported to the Australian Catholic Bishops Conference plenary meetings in May and November.

As BCCE chairmen at different times during 2015, Bishop O’Kelly and Archbishop Costelloe attended meetings of the National Catholic Education Commission as observers.



Role of the National Catholic Education Commission

3



**Catholic
education**
provides a
**balanced
and holistic
education**

The National Catholic Education Commission (NCEC or the Commission) is the official body charged by the Australian Catholic Bishops Conference with developing, advising, enunciating and acting upon policy at the national level for the Church's work in education. The NCEC is directly responsible to the Bishops Commission for Catholic Education.

The NCEC is the focal point for ongoing discussions and negotiations with the Australian Government and other national bodies involved in education. The Commission is also a national forum for discussions and debate on significant matters of interest and concern to Catholic education in Australia.

Responsibilities include:

- contributing to the national education policy debate;
- liaison with the Australian Government and other key national educational bodies;
- monitoring trends in educational theory and practice in Australia and overseas;
- consulting, complementing and working with Catholic education in each state and territory;
- identifying and disseminating data relevant to Catholic education;
- monitoring developments in faith formation and religious education; and
- monitoring research in Catholic education.

Membership of the NCEC

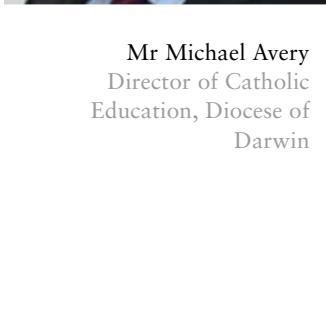
4



**The Hon
Greg Crafter AO**
Chair



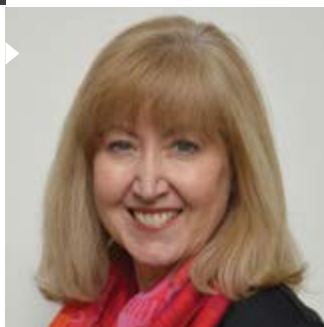
Dr Tim McDonald
Deputy Chair, NCEC
Executive Director,
Catholic Education
Western Australia



Mr Michael Avery
Director of Catholic
Education, Diocese of
Darwin



Ms Ann Bliss
Executive Director,
Federation of Catholic
School Parent
Communities (SA)



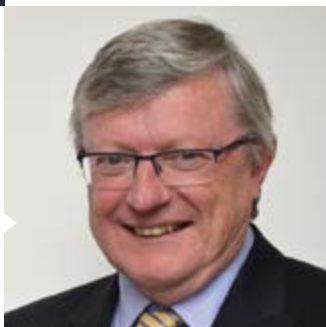
Prof Greg Craven
Vice Chancellor and
President, Australian
Catholic University



Mr Mike Byrne
Executive Director,
Queensland Catholic
Education Commission
(until May 2015)



Dr Brian Croke
Executive Director, Catholic
Education Commission NSW



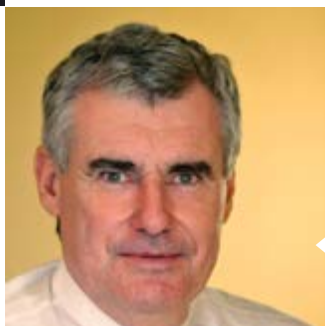
Sr Elizabeth Dodds RSC
Ministry and Governance
Consultant



Mr Stephen Elder
Executive Director
of Catholic Education,
Catholic Education
Melbourne

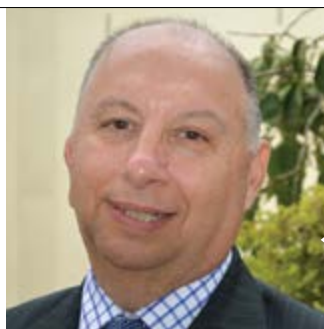


Most Rev James Foley
Bishop of Cairns
(until May 2015)





Most Rev Gerard Holohan
Bishop of Bunbury
(until May 2015)

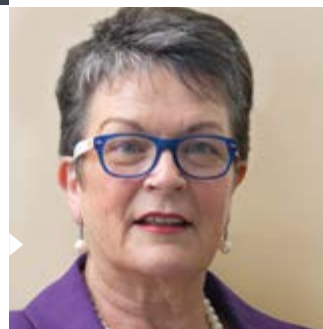


Mr John Mula
Director, Tasmanian
Catholic Education Office

Mrs Moira Najdecki
Director of Catholic
Education, Archdiocese of
Canberra & Goulburn



Ms Helen O'Brien
Director, Catholic
Education South Australia



Sr Catherine Slattery SGS
Director of Mission
Integration,
Good Samaritan Education



Mr Ross Fox
Executive Director
NCEC

Membership of the NCEC Secretariat

Mr Ross Fox
Executive Director

Ms Danielle Cronin
Deputy Director

Mr John McGrath
Senior Education Officer – Faith
Formation & Religious Education

Ms Wendy Stamp
Executive Officer

Mr Andrew Mellas
Policy Advisor

Ms Michelle Fitzgerald
Senior Policy Officer, part-time
(Canberra)

Dr Darian Naidoo
Data and Policy Analyst

Mr Gavin Abraham
Communications Manager

Ms Claudine Pitt
Executive Assistant
(until April 2015)

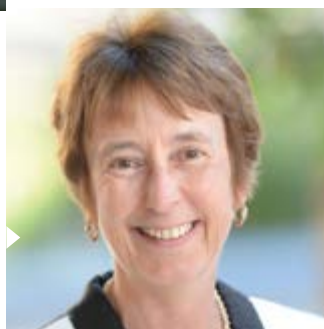
Ms Donna Drakeford
Executive Assistant
(from August 2015)

Ms Chris Hayes
Administration and Events Officer

Most Rev Mark Edwards OMI
Auxiliary Bishop of Melbourne
(from May 2015)



Dr Lee-Anne Perry
Executive Director,
Queensland Catholic
Education Commission
(from July 2015)



Most Rev Greg O'Kelly SJ
Bishop of Port Pirie
(from May 2015)

Report on NCEC activities

NCEC Meetings

C213 29 January 2015
Lancefield, VIC

C214 26 March 2015
Canberra

C215 21 May 2015
Sydney

C216 16 July 2015
Melbourne

C217 9 September 2015
Hobart

C218 22 October 2015
Sydney

C219 1 December 2015
Sydney



Major agenda items for the NCEC in 2015

Federal Budget 2015-16

The NCEC used its Pre-Budget Submission before the Commonwealth 2015-16 Budget to underline the key priorities facing Catholic education. Those issues were: Funding indexation that provides certainty and keeps pace with schools costs; Capital funding to support Catholic schools' ability to meet growing demand for places; Sufficient funding to support the education of students with disability.

Following the subsequent Budget, the NCEC welcomed funding certainty for Catholic schools until the end of 2017, but raised concerns about the Coalition's persistent proposal to use the consumer price index as the measure by which Commonwealth funding for schools will increase beyond 2017. Funding beyond 2017 was a key advocacy issue for the NCEC for the remainder of 2015.

Senate inquiry into education of students with disability

The NCEC's submission to the Senate Inquiry into access and attainment for students with disability outlined the significant increase in the number of students with disability in Catholic schools over the past decade and Catholic education's commitment to having that trend continue. Government funding that recognises the learning needs of students with disability and delivers the necessary funding to Catholic schools – not just government schools – was a key part of the NCEC submission.

Senate inquiry into education of Aboriginal and Torres Strait Islander students

Catholic schools have seen large increases in the number of Aboriginal and Torres Strait Islander students in recent years, which provided context for the NCEC's submission on the education of Indigenous students in Australia. The submission highlighted the work of Catholic schools in educating Indigenous students in all settings, including in some very remote settings where a Catholic school is the only educational provider. The submission called for greater access to early childhood education for Indigenous children, additional support to help students transition from school to work or ongoing study, and for more effort in the engagement of parents, carers and families in a student's educational endeavours.

Submission to inquiry into student radicalisation

In conjunction with state and territory Catholic Education Commissions, the NCEC provided material to support the Education Council's consideration of efforts to combat radicalisation in school settings. While there was an assessment that the risk of radicalisation or extremism in Catholic schools was very low, the submission explained that many initiatives in Catholic school communities, including well-being programs, social inclusion efforts and an emphasis on family and community partnerships, were part of creating harmonious environments for students.



Imposition of GST on private education

In the context of a broader discussion on Australia’s taxation system and its economic outlook, the prospect of imposing a goods and services tax on school fees in non-government schools was mooted. The NCEC said such a tax would create an unfair and unequitable burden on parents in Catholic and independent schools, adding that it would create a further divide between government and non-government schools despite efforts to break down those divisions.

Australian Charities and Not-for-Profits Commission

During 2015, the NCEC continued to engage with the Australian Government and the Australian Charities and Not-for-profits Commission (ACNC) about various aspects of the ACNC’s work relevant to Catholic education. While Catholic schools are committed to the transparency and accountability measures the ACNC requires, the ACNC has the potential to create duplication and unnecessary red tape that doesn’t support the education of students. The NCEC welcomed the extension of transitional arrangements that will delay the possible imposition of extra burdens, but called for that possibility to be eliminated.

Royal Commission into Institutional Responses to Child Sexual Abuse

The Truth, Justice and Healing Council is responsible for coordinating the Catholic Church’s response to the Royal Commission into Institutional Responses to Child Sexual Abuse. The National Catholic Education Commission liaised with the Truth, Justice and Healing Council on issues related to Catholic education during 2015 and will continue to work with the Council as the work of the Royal Commission continues.



To meet growing demand, **more than 70 new Catholic schools** are planned for the **next five years**



Vatican Congregation for Catholic Education conference

With the Vatican's Congregation for Catholic Education celebrating two milestones – the 50th anniversary of the Vatican II document on education and the 25th anniversary of the document *Ex Corde Ecclesiae* – Catholic education leaders from Australia attended a major conference in Rome. With the theme “Educating Today and Tomorrow: A Renewing Passion”, the conference drew thousands of educators from across the world to support the work of Catholic schools and universities. A number of Australians presented at the Vatican conference, reflecting the global standing of Catholic education in Australia.

Federation White Paper

The NCEC, on behalf of Catholic schools, participated in the Federation White Paper process to ensure that the work of Catholic education could be supported – and harm avoided – by any proposed changes to Australia's Federation. In a submission on the Education Issues paper, the NCEC emphasised the important relationship between Catholic schools and the Commonwealth Government and opposed any potential changes that could undermine that relationship. The NCEC said there is room for substantial collaboration between national, state and territory groups in education, but said that need not lead to changes in the way the Federation operates.

Tax White Paper

In a submission to the Commonwealth Government's Tax White Paper, the NCEC outlined the reasons why a goods and services tax on education would be detrimental and unfair for families who choose a Catholic education. It said the Discussion Paper's suggestion that no changes to GST be implemented as part of a tax reform was a sensible approach that reflects the important contribution of Catholic education to Australian society.



Faith formation and religious education officer

The Bishops Commission for Catholic Education's affirmation of the importance of the NCEC's work in the area of faith formation and religious education, supporting the work being carried out in states, territories, dioceses and schools, was demonstrated by the appointment of a full-time senior education officer to join the NCEC secretariat. The officer, who joined the secretariat in March 2015, works in conjunction with the Faith Formation and Religious Education Standing Committee to prioritise work in those areas.

Funding Principles for Catholic Schools

During 2015, the NCEC worked in conjunction with the Bishops Commission for Catholic Education to revise and endorse the Funding Principles for Catholic Schools. Through the seven principles outlined in the document, the NCEC advocates for sustainable and equitable funding arrangements for schools, including Catholic schools. The seven funding principles are: Parental choice; Religious freedom; Educational partnership; A fair allocative mechanism; Funding equity; Funding certainty; and Accountability and transparency.

NCEC Conference 2016

The NCEC supported the work of Catholic Education Western Australia in preparing for the five-yearly NCEC Conference scheduled for June 2016 in Perth. CEWA has continued the tradition of the host Catholic Education Commission handling the majority of the organisation of the conference, the theme for which is "Faith to Lead. Lead to Faith".

Federal Election 2016

With a federal election due in 2016, the NCEC began preparations for advocacy during the election year – in conjunction with state and territory Catholic Education Commissions. The Funding Communications Working Group was established to support the preparation of policy-focused material that would support work undertaken by Catholic education in formulating key messages ahead of the election. The NCEC's advocacy on sustainable and certain funding, capital funding to provide school places, support for students with disability and support for religious freedom were highlighted as key priorities.



Catholic schools
are committed
to **creating safe
environments**
for all students,
teachers and
families

Standing Committees

Operations Standing Committee

MEETINGS

OSC7 19 February 2015
Teleconference
OSC8 30 April 2015 Teleconference
OSC9 25 June 2015 Teleconference
OSC10 13 August 2015 Teleconference

MEMBERSHIP

Ross Fox – Chair
Michael Avery
Mike Byrne (until May)
Lee-Anne Perry (from July)
Brian Croke
Stephen Elder
Tim McDonald
John Mula
Moira Najdecki
Helen O'Brien

The Operations Standing Committee discussed a number of key issues facing Catholic education in Australia, including funding policy for Catholic schools, how religious freedom is supported – and will be supported in the future – in Catholic schools and the Australian Charities and Not-for-profits Commission and its effect on Catholic schools.

Finance, Audit and Risk Standing Committee

MEETINGS

11 March 2015 Teleconference
25 June 2015 Teleconference
25 August 2015 Teleconference
4 November 2015 Teleconference

MEMBERSHIP

Mike Byrne – Chair until March
Stephen Elder – Chair from June
Hon Greg Crafter AO
Moira Najdecki
Helen O'Brien
Ross Fox
Danielle Cronin (NCEC) – executive officer

The Finance, Audit and Risk Standing Committee considered a number of aspects of the NCEC's work in those important areas, including in assessing the NCEC's approach to risk management, its budgets and financial accounting and its annual audit. A risk management framework was introduced during 2015.

Strategy and Policy Standing Committee

MEETINGS

18 August 2015 via teleconference

MEMBERSHIP

Hon Greg Crafter AO – Chair
Pam Betts
Professor Greg Craven
Stephen Elder
Ross Fox
Mark Tannock
Wendy Stamp – executive officer

The new Strategy and Policy Standing Committee discussed issues of national significance for Catholic schools, including the Reform of the Federation White Paper process and school funding policy in Australia. Other strategic issues in school education were discussed by the committee.

Faith Formation and Religious Education Standing Committee

MEETINGS

17 March 2015 Sydney
7 May 2015 Sydney
14 July 2015 Melbourne
29 October 2015 Sydney

MEMBERSHIP

Sr Elizabeth Dodds RSC – Chair
Audrey Brown (VIC)
Mark Elliott (QLD)
Sandra Harvey (TAS)
Margaret Hughes (NT) (until May)
Laura Avery (NT) (from July)
Patrick McGrath (ACT)
Ian Smith (NSW)
Debra Sayce (WA)
Michael Vial (SA)
Siobhan Allen
Monica Dutton
Professor Br David Hall FMS
Martin Scroope
John McGrath (NCEC) – executive officer

The Faith Formation and Religious Education Standing Committee oversaw the development of a work plan for faith formation and religious education, outlining priorities for the NCEC's collaborative work in those areas. The group also discussed a Catholic perspective of general school curricula and coordinated the hosting of a national gathering of leaders of faith formation and religious education in October 2015. The committee also discussed how faith formation and religious education would be given sufficient prominence at the NCEC Conference 2016.

and Working Parties

Data Strategy Working Party

MEETINGS

24 February 2015 Sydney
27 May 2015 Sydney
21 August 2015 via teleconference
30 October 2015 Sydney

MEMBERSHIP

Brian Croke (NSW) – Chair
Danielle Cronin (NCEC)
John Hills (TAS)
Jeremy Howley (NT)
Malcolm McDougall (QLD)
Ray Moritz (SA)
Reuben Norris (WA)
Anna Rados (VIC)
Crichton Smith (NSW)
Tim Smith (ACT)
Darian Naidoo (NCEC) – executive officer

The Data Strategy Working Party provided a forum for dissemination of information and provision of advice on issues relating to collection, use and analysis of data in Catholic education, including through the Australian Catholic Education Statistics database.

Funding Analysis Expert Group

MEETINGS

13 April 2015 Sydney
20 May 2015 Sydney
21 August 2015 via teleconference
27 October 2015 via teleconference
12 November 2015 via teleconference

MEMBERSHIP

Ross Fox (NCEC) – Chair
Cyrus Li (QLD)
Malcolm McDougall (QLD)
Bruce Phillips (VIC)
Darian Naidoo (NCEC) – executive officer

The Funding Analysis Expert Group provided advice to the Operations Standing Committee based on detailed analysis of national data sets. It undertook analysis of current funding models, considered proposals for

future funding models and assessed how equity and needs-based funding can be delivered across Catholic schools. The group also provided advice on capital funding needs for Catholic schools.

Funding Communications Working Group

MEETINGS

15 September 2015 via teleconference
29 October 2015 via teleconference
11 December 2015 Sydney

MEMBERSHIP

Danielle Cronin (NCEC) – Chair
Monica Conway (SA)
Gerard Delaney (QLD)
Jim Hanna (NSW)
Trish Miller (WA)
John Mula (TAS)
Carmel Nash (Catholic School Parents Australia)
Michael Pountney (VIC)
Tim Smith (ACT)
Gavin Abraham (NCEC) – executive officer

The Funding Communications Working Group offered advice on communications strategy to inform Catholic school communities and the general community about policy priorities for Catholic education. Its work complemented and built on material produced by state and territory Catholic Education Commissions.

More Aboriginal and Torres Strait Islander Teachers Initiative (MATSITI)

MEETINGS

12 February 2015 Adelaide
5 June 2015 Adelaide
22 September 2015 Adelaide
21 November 2015 Adelaide

MEMBERSHIP

Roma Aloisi (SA) – Chair
Laura Avery (NT)
Norman Brahim (WA)
Andrea Brumby (TAS)

Freddie Eshiaa (NSW)
Catherine Henbest (VIC)
Carmen Jones (WA)
Michael Kenny (SA)
Kerry O'Callaghan (ACT)
Yve Rutch (QLD)
Mary Senj (NSW)
Simone Somerville (VIC)

The Catholic Education MATSITI project promoted a whole-of-career approach to workforce reform from school student aspirations, engagement with teacher education and recruitment and staff development back into Catholic schools. It promoted Catholic education as an “employer of choice” for Aboriginal and Torres Strait Islander peoples, which would deliver long-term benefits for schools and students.

Online Assessment Working Group

MEETINGS

21 April 2015 via teleconference
26 June 2015 Sydney
30 July 2015 via teleconference
21 August 2015 via teleconference
22 October 2015 Brisbane
9 December 2015 via teleconference

MEMBERSHIP

Liam Garvey (QLD) – Chair
Gavin Abraham (NCEC)
Danielle Cronin (NCEC)
Karen Ferrante (NSW)
Michael Haigh (VIC)
Sandra Harvey (TAS)
Jeremy Howley (NT)
Ray Moritz (SA)
Peter Noonan (WA)
Rosalie Nott (NSW)
Greg Parrish (CENet) – observer
Philip Petitt (ACT)
Jane Slattery (QLD)
Wendy Stamp (NCEC)

The NCEC Online Assessment Working Group was established to oversee aspects of the transition to online assessment for the Catholic sector.

Representation on national bodies

14

The Commission recognises the significance of NCEC representation on national education bodies and appreciates the time and effort expended by its many nominated representatives.

During 2015, the following officers represented NCEC on committees and working parties or as contact persons for the Catholic sector in various national education policy areas and projects. To inform their national representative work, these representatives often establish networks with colleagues with relevant responsibilities and expertise throughout Australian Catholic education. The NCEC also acknowledges the contributions made to policy networks to assist with the development of national policy.

National Body	Committee	NCEC Representative	Organisation
ABS	National School Statistics Collection Working Group	Ray Moritz	CESA
ACARA	Aboriginal and Torres Strait Islander Advisory Group	Mary Senj	CEC NSW
ACARA	Board	Tim McDonald	CEWA
ACARA	F-12 Curriculum Reference Group	Mandy Anderson	QCEC
ACARA	Finance Data Working Group	David Wilkes	CEM
ACARA	Marker Quality Team: NAPLAN Writing	Karen Ferrante	CEC NSW
ACARA	NAP Communications Group	Liam Garvey	QCEC
ACARA	NAP ICT Literacy Working Group	Liam Garvey	QCEC
ACARA	National Assessment, Data, Analysis and Reporting Reference Group (NADAR)	Rosalie Nott	CEC NSW
ACARA	National Education Communications Group	Gavin Abraham	NCEC
ACARA	National Testing Working Group	Karen Ferrante	CEC NSW
ACARA	Student Attendance Data Working Group (NADAR Sub-Group)	Rosalie Nott	CEC NSW
ACARA	Students with Disability Advisory Group	Geraldine Gray	CEC NSW
ACECQA	Australian Children's Education and Care Quality Authority forum	Jane Slattery	QCEC
ACNC	ACNC Sector User Group	Ross Fox	NCEC
AEF	Asia Education Foundation Board	Helen O'Brien	CESA
AEEYSOC	Aboriginal and Torres Strait Islander Education Advisory Group (ATSIEAG)	Mary Senj (Member) Roma Aloisi (Observer)	CEC NSW CESA
AEEYSOC	Copyright Advisory Group	Ian Baker	CEC NSW
AEEYSOC	Education Chief Information Officers Group	Michael Haigh	CEM
AEEYSOC	Schools Policy Group	Ross Fox (Member) Michael Byrne (Alternate) Danielle Cronin (Alternate)	NCEC QCEC (January-May 2015) NCEC (May-December 2015)
AEEYSOC SPG	Low Socio-Economic Status Loading Working Group	Ross Fox Michael Byrne	NCEC QCEC
AEEYSOC SPG	Reducing Violence against Women and Children project	Mandy Anderson	QCEC
AEEYSOC SPG	Safe and Supportive School Communities	Dennis Torpy	CEM

National Body	Committee	NCEC Representative	Organisation
AEEYSOC SPG	Schools Vocational Learning and Training Working Group	Bob Knight (Member) Gerard Delaney (Alternate)	QCEC CEC NSW
AEEYSOC	Data Strategy Group	Ross Fox (Member) Brian Croke (Alternate)	NCEC CEC NSW
AEEYSOC DSG	Early Childhood Data Strategy Sub-Group	Crichton Smith	CEC NSW
AEEYSOC DSG	English Language Proficiency Working Group	Maryanne Fleming	Brisbane Catholic Education
AEEYSOC DSG	Measurement of Student Wellbeing and Engagement Working Group	Peter Grace	CEC NSW
AEEYSOC DSG	National School Interoperability Sub-Group (NSIP)	Michael Haigh	CEM
AEEYSOC	Online Assessment Working Group (OAWG)	Liam Garvey	QCEC
AEEYSOC OAWG	NAPLAN Online Project Managers Working Group	Liam Garvey	QCEC
AITSL	Board (NCEC nominee until 1 June 2015)	Stephen Elder	CEM
AITSL	School Leader Quality Advisory Committee	Mary Oski	CEM
AITSL	Teacher Quality Advisory Committee	Elina Raso	CEM
Australian Government Department of Education and Training	Coding across the Curriculum	Robyn Finch	Rockhampton CEO
Australian Government Department of Education and Training	International Assessments Joint National Advisory Committee	Rosalie Nott	CEC NSW
Australian Government Department of Education and Training	Students at Risk of Radicalisation project	Lina Di Paolo	CEM
Education Council	Joint Working Group on Students with Disability	Tim Smith (Member) Danielle Cronin (Alternate)	CE C&G NCEC
Education Council	Joint Working Group Quality Assurance Sub-Group	Judy Connell	CEM
Education Services Australia	Board member	Brian Croke	CEC NSW
Education Services Australia	edu.au Domain Administration Committee	Michael Haigh	CEM
Education Services Australia	My Future Working Group	Paul Rodney (Member) Gerard Delaney (Alternate)	CEC NSW CEC NSW

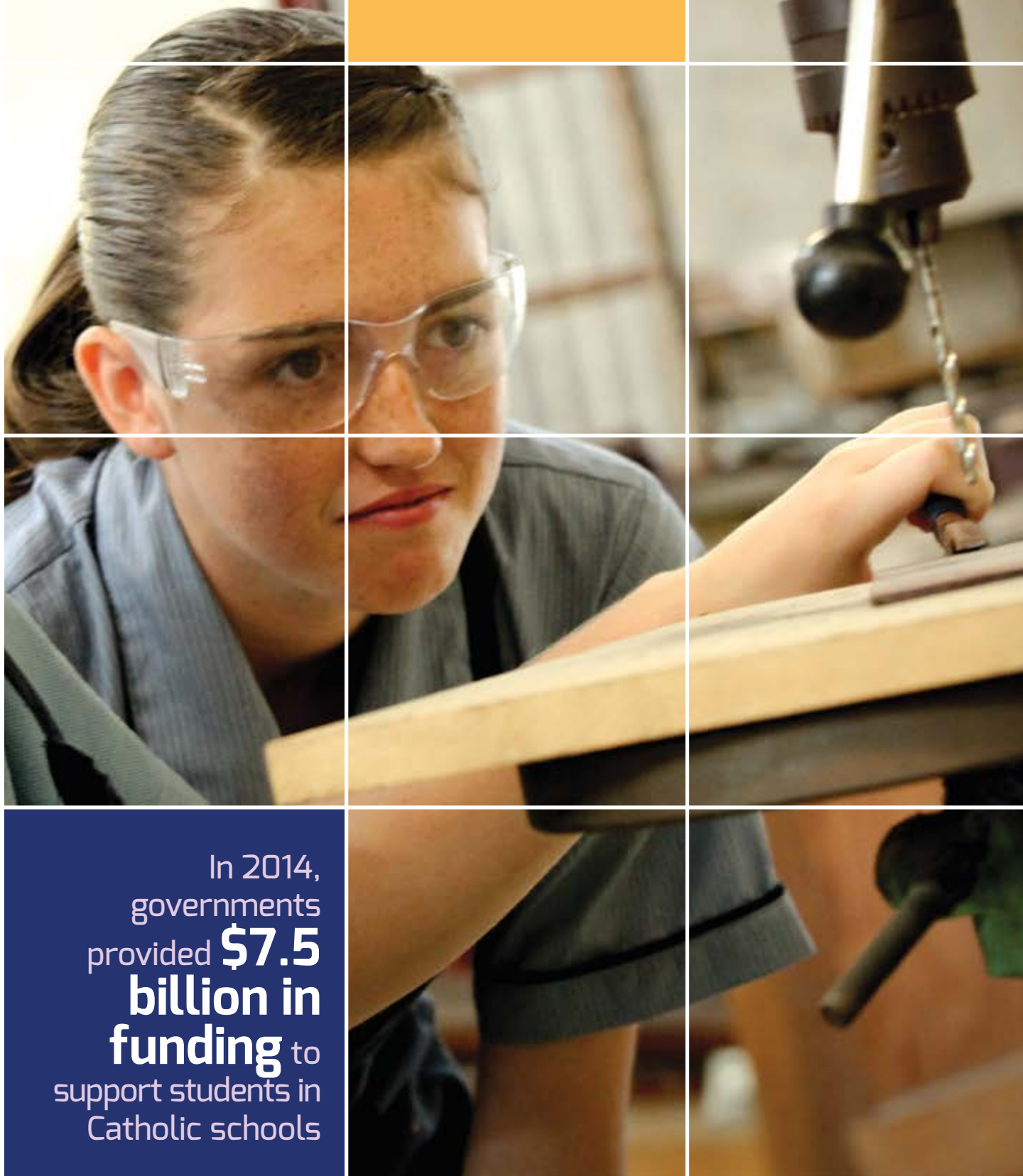
Key to representative's employers

CEC NSW	Catholic Education Commission New South Wales
CEO	Catholic Education Office
CE C&G	Catholic Education Office, Archdiocese of Canberra and Goulburn
CEM	Catholic Education Melbourne
CEO NT	Catholic Education Office, Northern Territory
CEO TAS	Catholic Education Office, Tasmania
CEWA	Catholic Education Western Australia
CESA	Catholic Education South Australia
CSO	Catholic Schools Office
NCEC	National Catholic Education Commission
QCEC	Queensland Catholic Education Commission

Acronym list for National Bodies

ABS	Australian Bureau of Statistics
ACARA	Australian Curriculum, Assessment and Reporting Authority
ACECQA	Australian Children's Education and Care Quality Authority
ACNC	Australian Charities and Not-for-profits Commission
AEEYSOC	Australian Education Early Childhood Development and Youth Senior Officials Committee
AEF	Asia Education Foundation
DSG	Data Strategy Group
ESA	Education Services Australia
SPG	Schools Policy Group

Summary Statistics



In 2014,
governments
provided **\$7.5**
billion in
funding to
support students in
Catholic schools

Summary Statistics – National

18

Summary statistics data are from the NCEC Australian Catholic Education Statistics database and the Australian Government Department of Education and Training (formerly the Department of Education, Employment and Workplace Relations) Annual School Census and Financial Questionnaire.

Funding and expenditure data is from the Australian Curriculum, Assessment and Reporting Authority and the Australian Government Department of Education and Training.

Note that totals may vary to the sum of the parts due to rounding.

Catholic schools in Australia, 2015	Schools	% of schools	Change from 2014
Primary	1,233	71	-10
Secondary	349	20	18
Combined primary/secondary	137	8	5
Special	10	1	0
Total	1,729	100	+13

**The differences in school numbers by type from 2014-2015, in part, reflect changing school classifications.*

Students in Australian Catholic schools, 2015	Students	% of students	Change from 2014
Primary	403,344	53	-10,149
Secondary	360,790	47	17,852
Total	764,134	100	7,703

**The differences in primary and secondary students from 2014-2015, in part, reflect changing definitions of primary and secondary students in Western Australia and Queensland.*

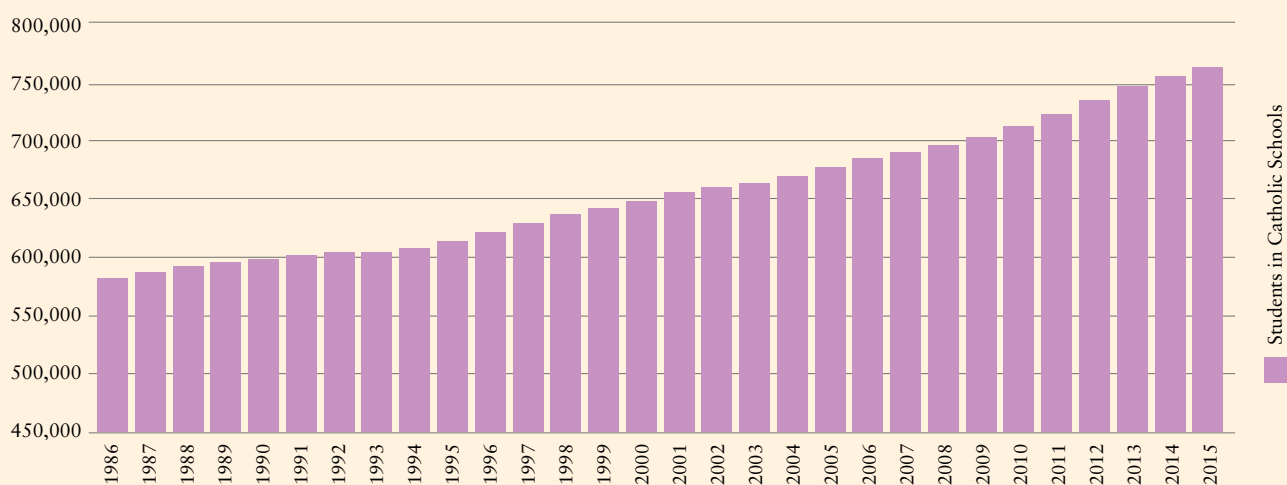
Specific student groups in Australian Catholic schools	Students	% of students	Change from 2014
Students with disabilities	34,642	4.5	987
Indigenous students	20,898	2.7	903
Full fee-paying overseas students	1,228	0.2	84
Boarding students	6,068	0.8	-56

Unless otherwise stated, statistics relate to systemic and non-systemic Catholic schools. Combined schools have students in both primary and secondary year levels.

Enrolment trends in Australian Catholic schools

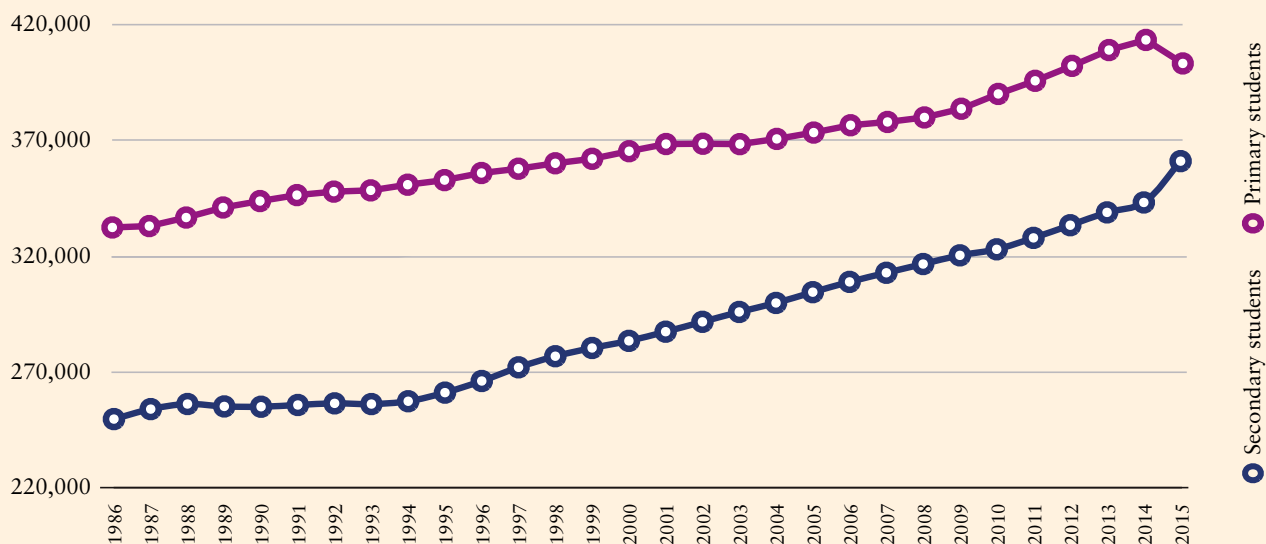
Student enrolments

There were 764,134 students in Australian Catholic schools in 2015. From 2014 to 2015, the number grew by 7,703.



Primary and secondary student enrolments

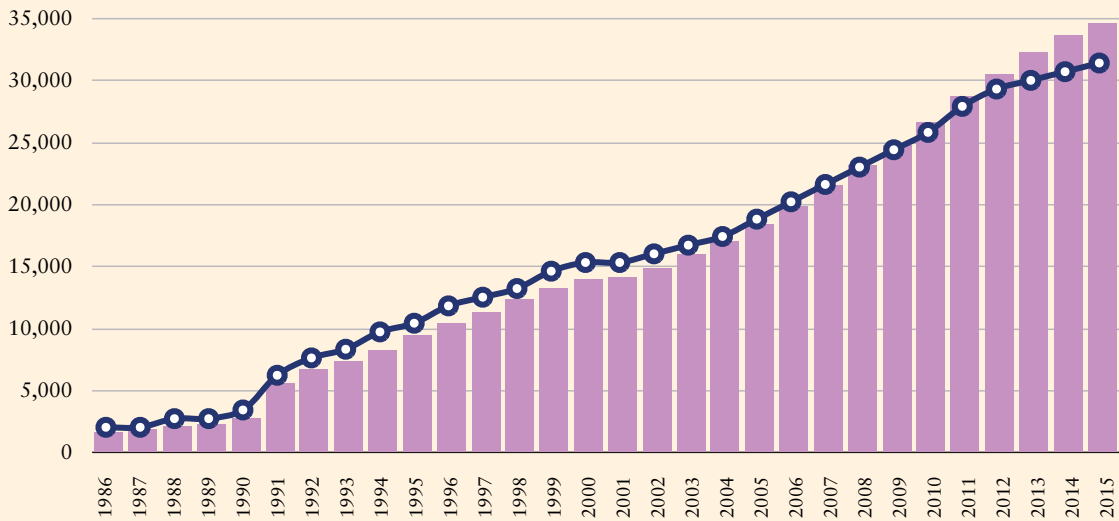
Total enrolments continue to increase in Australian Catholic schools. Due to the change in the grade classification of primary schools in Queensland and Western Australia, primary enrolments fell by 10,149 from 2014 to 2015. In contrast, secondary enrolments increased by 17,852. Since 1986, 61 per cent of the growth in Catholic school enrolments has been in secondary students, which have increased by 111,431, while primary enrolments have increased by 70,857.



Summary Statistics – National

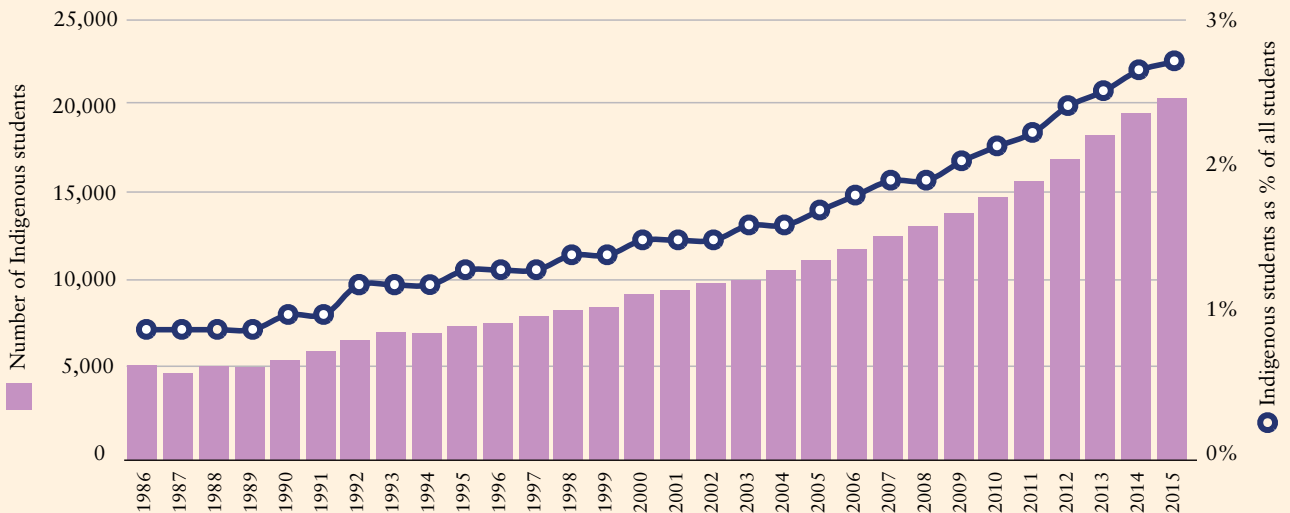
Students with disabilities

In 2015, there were 34,642 students with disabilities in Catholic schools, an increase of 987 from the previous year. Students with disabilities now represent 4.5 per cent of students in Catholic schools.



Indigenous students

There were 20,898 Indigenous students in Catholic schools in 2015, which represented 2.7 per cent of all students. This was an increase of 903 students from the previous year.



Staff (full-time equivalent) in Australian Catholic schools, 2015	Staff	% of staff	Change from 2014
Teachers (including Principals)	51,995	72	1,059
Non-teaching staff	20,620	28	734
Total staff	72,614	100	1,792

Teaching staff, including principals (full-time equivalent), 2015	Teaching staff	% of teachers	Change from 2014
Primary	23,777	46%	-181
Secondary	28,071	54%	+1,237
Special	147	<1%	+2
Female	36,545	70%	+849
Male	15,450	30%	+210
Primary teachers			
Female	19,778	83%	-18
Male	3,999	17%	-162
Secondary teachers			
Female	16,648	59%	+865
Male	11,422	41%	+371
Special school teachers			
Female	119	81%	+2
Male	29	19%	+1

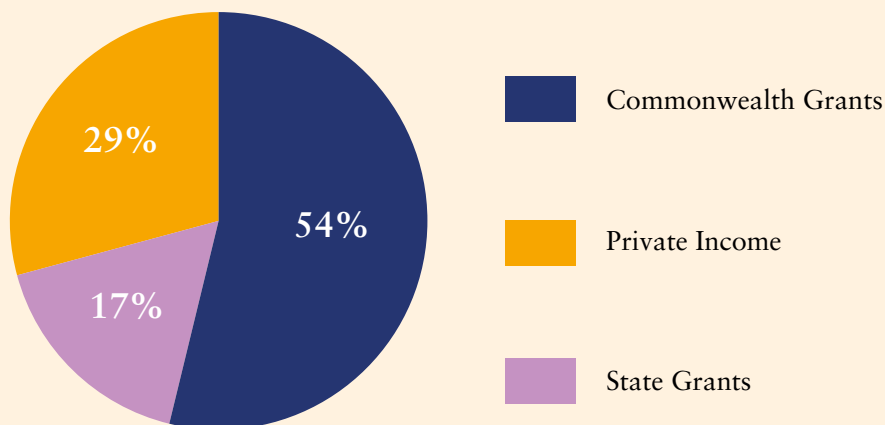
Student/staff ratios (full-time equivalent), 2015*			
	Primary	Secondary	Total
Student / teaching staff	16.9	12.8	14.7
Student / total staff	12.4	9.0	10.6

*Calculation does not include students and teachers in special schools

Summary Statistics

22

Sources of funding, 2014 (Calendar year)



Income per student (\$)	Primary schools	Secondary schools	Combined schools	All schools
Commonwealth Government recurrent income	7,028	8,430	7,389	7,618
State Government recurrent income	2,184	2,576	2,568	2,405
Private fees and charges	1,645	4,690	6,535	3,517
Other private income	445	723	817	614
Total gross income	11,302	16,419	17,309	14,155
Net recurrent income	10,743	15,164	15,743	13,182

Expenditure per student (\$)	Primary schools	Secondary schools	Combined primary/secondary	All Catholic schools
Recurrent	9,990	14,246	15,071	12,371
Capital	832	2,769	2,091	1,721
Total	10,822	17,015	17,162	14,092

Note: See Table L1-L4 for further information.

Summary statistics by state/territory, 2015

A. Schools

	ACT	NSW	NT	QLD	SA	TAS	VIC	WA	AUST
Primary	22	421	7	192	67	24	388	112	1,233
Secondary	5	132	5	74	11	5	89	28	349
Combined*	3	29	5	32	23	8	14	23	137
Special	0	6	0	0	2	0	2	0	10
Total	30	588	17	298	103	37	493	163	1,729
Boarding	0	18	1	16	3	0	4	9	51

*Primary and secondary

B. Students (full-time equivalent)

	ACT	NSW	NT	QLD	SA	TAS	VIC	WA	AUST
Primary	9,347	130,228	2,772	78,067	27,944	7,722	111,067	36,196	403,344
Secondary	8,711	125,128	2,361	67,224	19,891	7,179	95,079	35,219	360,790
Total	18,058	255,356	5,133	145,291	47,836	14,901	206,146	71,415	764,134

C. Boarding students (full-time equivalent)

	ACT	NSW	NT	QLD	SA	TAS	VIC	WA	AUST
Primary	–	–	–	3	–	–	–	89	92
Secondary	–	2,198	120	2,145	310	–	299	904	5,976
Total	–	2,198	120	2,148	310	–	299	993	6,068

D. Full fee-paying overseas students

	ACT	NSW	NT	QLD	SA	TAS	VIC	WA	AUST
Primary	16	36	1	32	3	–	118	52	258
Secondary	7	272	70	248	132	1	200	40	970
Total	23	308	71	280	135	1	318	92	1,228

E. Aboriginal and Torres Strait Islander students

	ACT	NSW	NT	QLD	SA	TAS	VIC	WA	AUST
Primary	172	4,002	1,023	2,748	403	532	770	1,623	11,274
Secondary	165	3,205	865	3,156	264	346	688	935	9,624
Total	337	7,207	1,888	5,904	667	878	1,458	2,558	20,898

F. Students with disabilities

	ACT	NSW	NT	QLD	SA	TAS	VIC	WA	AUST
Primary	314	7,298	232	2,866	1,334	339	5,670	1,273	19,326
Secondary	266	6,053	204	2,715	748	259	4,116	954	15,315
Total	580	13,351	436	5,581	2,081	598	9,787	2,227	34,642

Summary statistics by state/territory, 2015

24

G. Percentage of Catholic and Other-than-Catholic Primary and Secondary Students

	ACT	NSW	NT	QLD	SA	TAS	VIC	WA	AUST
Catholic Primary	69%	77%	55%	64%	51%	46%	74%	78%	71%
Other-than-Catholic Primary	31%	23%	45%	36%	49%	54%	26%	22%	29%
Catholic Secondary	67%	72%	39%	59%	52%	45%	70%	71%	67%
Other-than-Catholic Secondary	33%	28%	61%	41%	48%	55%	30%	29%	33%
Total Catholic %	68%	74%	47%	61%	52%	46%	72%	74%	69%
Total Other-than-Catholic %	32%	26%	53%	39%	48%	54%	28%	26%	31%

H. Teaching staff, including principals (full-time equivalent)

	ACT	NSW	NT	QLD	SA	TAS	VIC	WA	AUST
PRIMARY									
Females	422	6,186	153	3,778	1,241	344	5,934	1,722	19,778
Males	104	1,024	30	761	383	95	1,233	369	3,999
Total	526	7,210	183	4,539	1,624	439	7,167	2,090	23,777
SECONDARY									
Females	385	5,770	128	3,117	898	303	4,490	1,557	16,648
Males	274	3,814	93	2,147	690	245	3,021	1,140	11,422
Total	658	9,584	220	5,264	1,589	548	7,511	2,697	28,071
SPECIAL									
Females	–	78	–	–	22	–	19	–	119
Males	–	16	–	–	5	–	8	–	29
Total	–	94	–	–	27	–	27	–	147
ALL TEACHERS									
Females	806	12,034	281	6,895	2,161	646	10,442	3,279	36,545
Males	378	4,853	123	2,908	1,078	340	4,262	1,508	15,450
Total	1,184	16,887	403	9,803	3,239	987	14,705	4,787	51,995

I. Non-teaching staff (full-time equivalent)

	ACT	NSW	NT	QLD	SA	TAS	VIC	WA	AUST
Primary	110	1,996	197	2,152	671	215	1,958	1,340	8,637
Secondary	252	3,109	152	2,645	664	251	3,417	1,326	11,816
Special	–	102	–	–	41	–	24	–	167
Total	362	5,207	349	4,796	1,376	464	5,399	2,666	20,619

J. Student/teaching staff (full-time equivalent) ratio

	ACT	NSW	NT	QLD	SA	TAS	VIC	WA	AUST
Primary	17.8	18.0	15.1	17.2	17.2	17.6	15.5	17.3	16.9
Secondary	13.2	13.0	10.7	12.8	12.5	13.1	12.6	13.0	12.8

K. Student/all staff (full-time equivalent) ratio

	ACT	NSW	NT	QLD	SA	TAS	VIC	WA	AUST
Primary	14.7	14.1	7.3	11.7	12.2	11.8	12.2	10.5	12.4
Secondary	9.6	9.8	6.3	8.5	8.8	9.0	8.7	8.7	9.0

L. Income and expenditure (\$ per student), 2015

Note: Figures are rounded to the nearest dollar. Totals may vary to the sum of the parts due to rounding. Net recurrent income is the sum of all government and private income minus deductions for capital expenditure (deductions not reported).

L1. Catholic primary schools

	ACT	NSW	NT	QLD	SA	TAS	VIC	WA	AUST
Commonwealth Government recurrent income	6,779	6,928	10,080	6,711	7,289	7,851	7,032	7,717	7,028
State Government recurrent income	1,939	2,202	2,771	2,045	1,903	1,909	2,155	2,802	2,184
Private fees and charges	2,110	1,501	1,380	1,931	2,541	1,450	1,361	1,847	1,645
Other private income	557	627	1,296	387	281	316	319	351	445
Total gross income	11,385	11,259	15,527	11,073	12,014	11,525	10,867	12,717	11,302
Net recurrent income	10,923	10,896	15,265	10,661	11,402	10,743	10,097	11,812	10,743

Recurrent expenditure	9,249	10,144	12,867	9,816	10,776	10,167	9,578	10,637	9,990
Capital expenditure	2,393	410	721	818	528	1,233	1,216	907	832
Total expenditure	11,642	10,554	13,588	10,634	11,304	11,400	10,794	11,544	10,822
Loans at the start of the year	238	1,937	1,218	1,580	1,859	2,936	2,108	2,032	1,900
Loans at the end of the year	309	1,774	1,029	1,520	1,710	3,390	2,435	2,165	1,942
Annual movement in borrowing	71	-162	-189	-61	-150	455	327	133	42

Summary statistics by state/territory, 2015

L2. Catholic secondary schools

	ACT	NSW	NT	QLD	SA	TAS	VIC	WA	AUST
Commonwealth Government recurrent income	7,531	8,260	12,361	8,910	8,421	9,050	8,421	8,447	8,430
State Government recurrent income	2,232	2,754	3,797	2,848	2,229	3,056	2,220	3,578	2,576
Private fees and charges	5,774	4,666	3,385	4,647	4,839	3,356	4,748	4,042	4,690
Other private income	570	855	1,027	732	469	643	594	553	723
Total gross income	16,106	16,535	20,570	17,137	15,958	16,105	15,983	16,621	16,419
Net recurrent income	15,293	15,674	18,697	16,224	15,347	14,028	14,027	14,439	15,164
Recurrent expenditure	13,874	14,179	18,637	14,863	14,807	13,643	13,809	14,947	14,246
Capital expenditure	1,995	1,995	5,439	6,355	1,491	2,741	2,103	12,631	2,769
Total expenditure	15,869	16,174	24,076	21,218	16,298	16,384	15,912	27,578	17,015
Loans at the start of the year	1,783	2,963	16,561	4,098	1,678	4,895	3,944	6,370	3,761
Loans at the end of the year	1,568	3,204	17,736	5,279	1,243	4,739	3,989	7,398	4,116
Annual movement in borrowing	-215	241	1,176	1,181	-435	-156	46	1,028	355

L3. Catholic combined schools

	ACT	NSW	NT	QLD	SA	TAS	VIC	WA	AUST
Commonwealth Government recurrent income	7,174	6,696	17,030	7,483	7,359	8,450	5,785	7,553	7,389
State Government recurrent income	2,122	2,453	3,142	2,383	2,014	2,501	1,766	3,354	2,568
Private fees and charges	6,824	6,844	1,790	5,495	6,779	3,168	12,583	5,919	6,535
Other private income	1,608	1,050	1,260	863	548	703	1,492	473	817
Total gross income	17,727	17,043	23,222	16,224	16,700	14,822	21,626	17,299	17,309
Net recurrent income	16,679	15,862	22,859	14,908	15,281	13,082	18,751	15,579	15,743
Recurrent expenditure	13,751	16,027	18,132	13,521	14,681	12,824	18,382	15,625	15,071
Capital expenditure	534	1,177	1,622	3,234	1,381	1,559	2,509	1,915	2,099
Total expenditure	14,285	17,204	19,754	16,755	16,062	14,383	20,891	17,540	17,170
Loans at the start of the year	4,350	3,717	580	4,753	6,053	6,449	5,780	6,190	5,070
Loans at the end of the year	3,859	3,392	558	5,347	5,781	6,427	5,386	6,985	5,168
Annual movement in borrowing	-491	-325	-22	594	-272	-23	-394	795	98

Summary statistics by state/territory, 2015

28

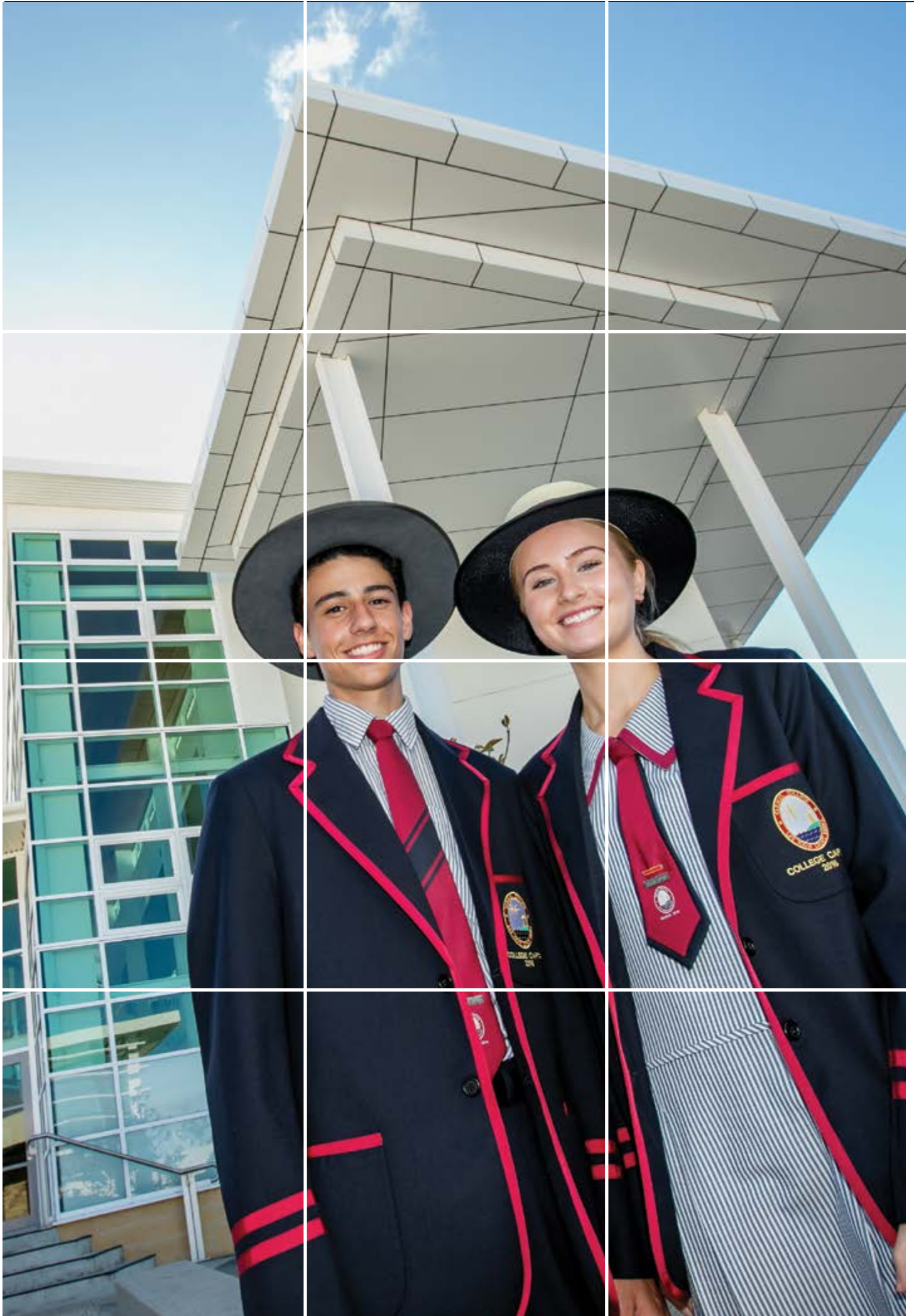
L4. All Catholic schools

	ACT	NSW	NT	QLD	SA	TAS	VIC	WA	AUST
Commonwealth Government recurrent income	7,105	7,538	13,606	7,520	7,664	8,411	7,581	7,722	7,618
State Government recurrent income	2,071	2,490	3,305	2,354	2,061	2,451	2,177	3,127	2,405
Private fees and charges	4,121	3,320	2,031	3,472	4,513	2,602	3,444	4,005	3,517
Other private income	719	788	1,189	589	421	545	508	424	614
Total gross income	14,017	14,135	20,132	13,935	14,660	14,009	13,710	15,277	14,155
Net recurrent income	13,342	13,476	19,421	13,180	13,760	12,516	12,318	13,909	13,182
Recurrent expenditure	11,892	12,482	16,538	12,118	13,277	12,106	11,906	13,082	12,371
Capital expenditure	1,967	1,180	2,304	2,863	1,043	1,791	1,666	1,867	1,721
Total expenditure	13,859	13,662	18,842	14,981	14,320	13,897	13,572	14,949	14,092
Loans at the start of the year	1,700	2,558	5,185	3,044	3,930	4,716	3,099	4,302	3,087
Loans at the end of the year	1,544	2,540	5,438	3,488	3,666	4,827	3,265	4,860	3,245
Annual movement in borrowing	-155	-18	252	444	-264	111	166	558	159



**Financial
Report**
for the Year
Ended 31
December 2015





National Catholic Education Commission's Financial Report

FOR THE YEAR ENDED 31 DECEMBER 2015

The National Catholic Education Commission (NCEC) submits their financial report for the year ended 31 December 2015.

Commission members

The NCEC is appointed by the Bishops Commission for Catholic Education. The NCEC consists of 16 members representing various aspects of Catholic education.

Principal activities

The dominant activity of the NCEC during 2015 was policy development, analysis, advocacy, and development of the relationship between Catholic education and the Australian Government. This included collaboration with state and territory Catholic education commissions and advocacy in relation to the Australian Government school funding arrangements under the Australian Education Act. In 2015 the Department of Education and Training initiated a review of the main accountability to the Australian Government, the Financial Questionnaire. A Senior Education Officer, Faith Formation and Religious Education was employed and the NCEC Standing Committee for Faith Formation and Religious Education initiated. Significant effort was put into analysis of future school funding policy options for state and territory Catholic education commissions.

Operating result

There was a net operating surplus of \$87,077 for 2015 (2014: \$321,413).

Signed on behalf of the NCEC.



The Hon Greg Crafter AO
Chair



Mr Ross Fox
Executive Director

March 2016



In 2014, Catholic school parents paid **\$3.1 billion** in fees to support their children's education





Ernst & Young
121 Marcus Clarke Street
Canberra ACT 2600 Australia
GPO Box 281 Canberra ACT 2601

Tel: +61 2 6267 3888
Fax: +61 2 6246 1500
ey.com/au

Auditor's Independence Declaration to the Commission of National Catholic Education Commission

In relation to our audit of the financial report of National Catholic Education Commission for the financial year ended 31 December 2015, and in accordance with the requirements of Subdivision 60-C of the *Australian Charities and Not-for profits Commission Act 2012*, to the best of my knowledge and belief, there have been no contraventions of the auditor independence requirements of the *Australian Charities and Not-for profits Commission Act 2012* or any applicable code of professional conduct.

Ernst & Young

Ben Tansley
Partner
11 March 2016

Statement of Comprehensive Income

FOR THE YEAR ENDED 31 DECEMBER 2015

34

	Note	2015 \$	2014 \$
Revenue	2	2,808,459	2,600,196
Employee expenses		(1,642,131)	(1,347,253)
Depreciation and amortisation expenses	3	(83,355)	(53,683)
Rent expense		(144,608)	(152,304)
Meeting expenses		(451,682)	(454,122)
Outsourcing expenses		(55,863)	(60,398)
Office and other expenses		(313,632)	(211,023)
Funding research project		(30,111)	–
Profit for the year		87,077	321,413
Other comprehensive income		–	–
Total comprehensive income for the year		87,077	321,413

The accompanying notes form part of these financial statements.

Statement of Financial Position

AS AT 31 DECEMBER 2015

	Note	2015 \$	2014 \$
ASSETS			
CURRENT ASSETS			
Cash and cash equivalents	4	1,928,895	1,043,301
Trade and other receivables	5	71,038	104,847
Other financial assets	6	1,200,000	1,700,000
Other current assets	7	72,047	38,415
TOTAL CURRENT ASSETS		3,271,980	2,886,563
NON-CURRENT ASSETS			
Property, plant and equipment	8	216,148	280,888
Intangible assets	9	22,025	34,755
TOTAL NON-CURRENT ASSETS		238,173	315,643
TOTAL ASSETS		3,510,153	3,202,206
LIABILITIES			
CURRENT LIABILITIES			
Trade and other payables	10	607,026	513,338
Provisions	11	216,607	115,126
TOTAL CURRENT LIABILITIES		823,633	628,464
NON CURRENT LIABILITIES			
Provisions	11	55,339	29,638
TOTAL LIABILITIES		878,972	658,102
NET ASSETS		2,631,181	2,544,104
EQUITY			
Retained earnings		1,515,331	1,428,254
Reserves		1,115,850	1,115,850
TOTAL EQUITY		2,631,181	2,544,104

The accompanying notes form part of these financial statements.

Statement of Changes in Equity

FOR THE YEAR ENDED 31 DECEMBER 2015

36

	Retained Earnings	Long Service Leave Reserve	Capital Replacement	Policy Planning Reserve	National Convention Reserve	Responsible Entity Curriculum Project Reserve	Legal Fees	Total
	\$	\$	\$	\$	\$	\$	\$	\$
Balance at 1 January 2014	1,106,841	20,050	145,800	350,000	400,000	100,000	100,000	2,222,691
Total comprehensive income for the period	321,413	–	–	–	–	–	–	321,413
Balance at 31 December 2014	1,428,254	20,050	145,800	350,000	400,000	100,000	100,000	2,544,104
Total comprehensive income for the period	87,077	–	–	–	–	–	–	87,077
Balance at 31 December 2015	1,515,331	20,050	145,800	350,000	400,000	100,000	100,000	2,631,181

The accompanying notes form part of these financial statements.

Statement of Cash Flows

FOR THE YEAR ENDED 31 DECEMBER 2015

	Note	2015 \$	2014 \$
CASH FLOWS FROM OPERATING ACTIVITIES			
Receipts from subsidies and other income		2,770,047	2,530,362
Interest received		34,690	65,838
GST collected/(remitted) from/(to) the ATO		12,306	(18,847)
Payments to employees and suppliers		(2,504,088)	(2,190,265)
Net cash provided by operating activities		312,955	387,088
CASH FLOWS FROM INVESTING ACTIVITIES			
Purchase of property, plant and equipment		(5,885)	(297,008)
CASH FLOWS FROM FINANCING ACTIVITIES			
Proceeds from related party		2,270,488	847,893
Repayment to related party		(2,191,964)	(404,700)
Net increase in current account		78,524	443,193
Net cash from investing and financing activities		72,639	146,185
Net increase in cash held		385,594	533,273
Cash at beginning of the financial year		2,743,301	2,210,028
Cash at end of the financial year	4	3,128,895	2,743,301

The accompanying notes form part of these financial statements.

Notes to the Financial Statements

FOR THE YEAR ENDED 31 DECEMBER 2015

38

Note 1: Statement of Significant Accounting Policies

The NCEC is an unincorporated body of the Australian Catholic Bishops Conference (ACBC) reporting through the Bishops Commission for Catholic Education (BCCE) and was established in 1974. It is not incorporated under the Corporations Act 2001. As a not-for-profit entity the NCEC is registered with the *Australian Charities and Not-for-profits Commission*.

The Commission have prepared the financial statements on the basis that the Commission is a non-reporting entity because there are no users dependent on general purpose financial statements. These financial statements are therefore a special purpose financial report that has been prepared in order to satisfy the financial reporting requirements of the Commission and the *Australian Charities and Not-for-profits Commission Act 2012*. The Commission is a not-for-profit entity for the financial reporting purposes under Australian Accounting Standards.

The financial statements have been prepared in accordance with the significant accounting policies disclosed below, which the Commission have determined are appropriate to meet the needs of members. Such accounting policies are consistent with the previous period unless stated otherwise.

The financial statements have been prepared on an accruals basis and are based on historical costs unless otherwise stated in the notes. The accounting policies that have been adopted in the preparation of the statements are as follows:

The financial statements were authorised for issue on 26 March 2016 by the Commissioners.

Accounting Policies

a. Income Tax

No provision for income tax has been raised, as the Commission is exempt from income tax under Division 50 of the *Income Tax Assessment Act 1997*.

b. Inventories

Inventories are measured at the lower of cost and current replacement value.

Inventories acquired at no cost, or for nominal consideration are valued at the current replacement cost as at the date of acquisition.

c. Property, Plant and Equipment

All property, plant and equipment are initially measured at cost and are depreciated over their useful lives on a straight-line basis. Depreciation commences from the time the asset is available for its intended use.

The depreciation rates used for each class of depreciable assets are:

Class of Fixed Asset	Depreciation Rate
Plant and Equipment	10 – 67%
Leasehold Improvements	20%

Property, plant and equipment is measured on the cost basis, less depreciation and impairment losses.

The assets' residual values and useful lives are reviewed, and adjusted if appropriate, at the end of each reporting period.

An asset's carrying amount is written down immediately to its recoverable amount if the asset's carrying amount is greater than its estimated recoverable amount.

Gains and losses on disposals are determined by comparing proceeds with the carrying amount. These gains or losses are recognised immediately in the Statement of Comprehensive Income.

d. Leases

Leases of fixed assets, where substantially all the risks and benefits incidental to the ownership of the asset (but not the legal ownership) are transferred to the entity, are classified as finance leases.

Leased assets are depreciated on a straight-line basis over their estimated useful lives where it is likely that the entity will obtain ownership of the asset.

Lease payments for operating leases, where substantially all the risks and benefits remain with the lessor, are recognised as expenses on a straight-line basis over the lease term.

Lease incentives under operating leases are recognised as a liability and amortised on a straight-line basis over the life of the lease term.

Notes to the Financial Statements

FOR THE YEAR ENDED 31 DECEMBER 2015

e. Impairment of Assets

At the end of each reporting period, property, plant and equipment, intangible assets and investments are reviewed to determine whether there is any indication that those assets have suffered an impairment loss. If there is an indication of possible impairment, the recoverable amount of any affected asset (or group of related assets) is estimated and compared with its carrying amount. The recoverable amount is the higher of the asset's fair value less costs to sell and the present value of the asset's future cash flows discounted at the expected rate of return. If the estimated recoverable amount is lower, the carrying amount is reduced to its estimated recoverable amount and an impairment loss is recognised immediately in the Statement of Comprehensive Income.

Where the future economic benefits of the asset are not primarily dependent upon on the asset's ability to generate net cash inflows and when the entity would, if deprived of the asset, replace its remaining future economic benefits, value in use is determined as the depreciated replacement cost of an asset.

Where it is not possible to estimate the recoverable amount of a class of asset, the entity estimates the recoverable amount of the cash-generating unit to which the asset belongs.

f. Employee Benefits

Provision is made for the Commission's liability for employee benefits arising from services rendered by employees to the end of the reporting period. Employee benefits have been measured at the amounts expected to be paid when the liability is settled, plus related on-costs.

Contributions are made by the Commission to an employee superannuation fund and are charged as an expense when incurred.

g. Cash and cash equivalents

Cash and cash equivalents include cash on hand, deposits held at call with banks, other short-term highly liquid investments with original maturities of three months or less, and bank overdrafts. Bank overdrafts are shown within short-term borrowings in current liabilities on the Statement of Financial Position.

h. Revenue

Revenue from the Bishops Conference Subsidy and Project income is recognised when received.

Interest revenue is recognised using the effective interest rate method.

All revenue is stated net of the amount of goods and services tax (GST).

i. Economic Dependency

The Commission is dependent upon the financial support of the Australian Catholic Bishops Conference for the majority of its revenue used to operate the business. At the date of this report the Commission has no reason to believe the Australian Catholic Bishops Conference will not continue to support the Commission.

j. Goods and Services Tax (GST)

Revenues, expenses and assets are recognised net of the amount of GST, except where the amount of GST incurred is not recoverable from the Australian Taxation Office (ATO), in which case the GST is recognised as part of the cost of acquisition of the asset or as part of an item of the expense. Receivables and payables stated are stated inclusive of the amount of GST receivable or payable. The net amount of GST recoverable from, or payable to, the ATO is included with other receivables or payables in the Statement of Financial Position.

Cash flows are presented in the statement of cash flows on a gross basis, except for the GST component of investing and financing activities, which are disclosed as operating cash flows.

k. Intangibles

Software and websites are recorded at cost. Software and websites have a finite life and is carried at cost less any accumulated amortisation and impairment losses. Software has an estimated useful life of three years and websites three to five years. It is assessed annually for impairment.

Notes to the Financial Statements

FOR THE YEAR ENDED 31 DECEMBER 2015

40

l. Trade and Other Payables

Trade payables represent the liabilities for goods and services received by the company that remain unpaid at the end of the reporting period. They are recognised at their transaction price. Trade payables are subject to normal credit terms (30–60 days) and do not bear interest.

m. Comparative Figures

Comparative figures have been adjusted to conform to changes in presentation for the current financial year where required by accounting standards or as a result of changes in accounting policy.

n. Accounts Receivable and Other Debtors

Accounts receivable and other debtors include amounts due from state and territory Catholic Education Commissions. Receivables expected to be collected within twelve months of the end of the reporting period are classified as current assets. All other receivables are classified as non-current assets.

o. Critical Accounting Estimates and Judgements

The Commission evaluate estimates and judgements incorporated into the financial report based on historical knowledge and best available current information. Estimates assume a reasonable expectation of future events and are based on current trends and economic data, obtained both externally and within the Commission.

Impairment

The Commission assesses impairment at each reporting date by evaluating conditions specific to the Commission that may lead to impairment of assets. Should an impairment exist, the determination of the recoverable amount of the asset may require incorporation of a number of key estimates. No impairment indicators were present at 31 December 2015.

p. Australian Accounting Standards and Interpretations issued but not yet effective

The Australian Accounting Standards Board has issued new and amended accounting standards and interpretations that have mandatory application dates for future reporting periods. It is anticipated that the new requirements will have no material impact on future reporting periods.



Notes to the Financial Statements

FOR THE YEAR ENDED 31 DECEMBER 2015

42

	2015	2014
	\$	\$
Note 2: Revenue		
Revenue		
- Bishops conference subsidy	2,568,000	2,528,000
- Bishop's reserve	200,000	-
	<u>2,768,000</u>	<u>2,528,000</u>
Other Income		
- Interest received	38,412	69,834
- Other	2,047	2,362
Total revenue	<u>2,808,459</u>	<u>2,600,196</u>

Note 3: Profit

a. Expenses:		
Depreciation and amortisation expense	83,355	53,683
Auditor remuneration		
- audit services	8,500	9,550
- other services	4,000	-
Total auditor remuneration	<u>12,500</u>	<u>9,550</u>

Note 4: Cash and cash equivalents

Cash with Diocesan Development Fund	1,928,882	1,043,067
Cash on hand	13	234
Cash and cash equivalents	<u>1,928,895</u>	<u>1,043,301</u>

For the purpose of the Statement of Cash Flows, cash and cash equivalents are made up as follows:

Cash with Diocesan Development Fund and on hand	1,928,895	1,043,301
Term Deposit	1,200,000	1,700,000
Cash and Cash Equivalents as per Statement of Cash Flows	<u>3,128,895</u>	<u>2,743,301</u>

Notes to the Financial Statements

FOR THE YEAR ENDED 31 DECEMBER 2015

	2015	2014
	\$	\$
Note 5: Trade and other receivables		
CURRENT		
Trade debtors	49,627	71,131
GST receivable	21,411	33,716
	<u>71,038</u>	<u>104,847</u>
Note 6: Other financial assets		
Unsecured		
Term Deposit	<u>1,200,000</u>	<u>1,700,000</u>
Note 7: Other current assets		
Prepayments	<u>72,047</u>	<u>38,415</u>
Note 8: Property, plant and equipment		
Plant and Equipment – at cost	127,490	123,085
Less accumulated depreciation	<u>(63,233)</u>	<u>(34,931)</u>
	<u>64,257</u>	<u>88,154</u>
Leasehold Improvements – at cost	211,735	210,255
Less accumulated amortisation	<u>(59,844)</u>	<u>(17,521)</u>
	<u>151,891</u>	<u>192,734</u>
Total plant, equipment and leasehold improvements	<u>216,148</u>	<u>280,888</u>
Note 9: Intangible assets		
Computer Software – at cost	207,743	207,743
Less accumulated amortisation	<u>(185,718)</u>	<u>(172,988)</u>
Net carrying value	<u>22,025</u>	<u>34,755</u>

Notes to the Financial Statements

FOR THE YEAR ENDED 31 DECEMBER 2015

44

	2015	2014
	\$	\$
Note 10: Trade and other payables		
CURRENT		
Current Account – Catholic Education Commission, NSW	521,717	443,193
Accrued expenses	8,500	10,154
Trade creditors	8,646	14,370
PAYG payable	49,530	37,474
Employee benefits	18,633	8,147
	<u>607,026</u>	<u>513,338</u>

The Current Account – Catholic Education Commission, NSW is an interest-free related party balance, payable on issue of an invoice.

Note 11: Provison

CURRENT		
Annual Leave	94,060	38,508
Long Service Leave	122,547	76,618
	<u>216,607</u>	<u>115,126</u>
NON CURRENT		
Long Service Leave	55,339	29,638
	<u>55,339</u>	<u>29,638</u>

Note 12: Events after Balance Sheet Date

There have been no events subsequent to reporting date, which require disclosure in the financial statements.

Note 13: Capital Management

The Commission controls the capital of the NCEC to ensure that adequate cash flows are generated to fund operations. The Commission is responsible to form the overall risk management strategy which includes a risk management policy and framework and policies covering investment, reserves and financial delegations. The Commission's capital consists of financial liabilities, supported by financial assets.

The Commission effectively manages the Commission's capital by assessing the Commission's financial risks and responding to changes in these risks and in the market. These responses may include the consideration of debt levels.

The Commission does not have a formal policy on capital management and gearing ratios.

Notes to the Financial Statements

FOR THE YEAR ENDED 31 DECEMBER 2015

Note 14: Capital and Leasing Commitments

Operating Lease Commitments

	2015	2014
	\$	\$
Payable – minimum lease payments		
- not later than 1 year	148,158	142,630
- later than 1 year but not later than 5 years	342,455	490,613
	490,613	633,243

a. The property lease commitments are non-cancellable operating leases contracted for but not capitalised in the financial statements with a five year term. The NCEC has two 5 year extensions available should they wish to extend the initial 5 year term. Increases in lease commitments may occur in line with the consumer price index (CPI).

b. The operating lease includes a rental agreement for a photocopier. It is a 5 year lease.

Note 15: Reserves

a. Capital Replacement Reserve

These funds are to be used in funding office information technology equipment, facilities upgrade and fitouts as required.

b. Long Service Leave Reserve

Funds in this reserve are used to cover the long service leave for future contract staff.

c. Policy Planning Reserve

This reserve holds funds to cover the wages and travel of a new staff member (on contract) who will be working on education policy and planning.

d. National Convention Reserve

Funds in this reserve are used to cover the costs associated with the 2016 NCEC conference.

e. Responsible Entity Curriculum Reserve

Funds in this reserve is to enable NCEC to investigate the development of e-learning resources in Religious Education.

f. Legal Fees Reserve

Funds in this reserve is to meet the costs of obtaining legal advice with regard to funding models and the Commonwealth Government's review of funding and related regulations.

Note 16: Contingent Liabilities and Assets

At the date of this report, there were no contingent liabilities or assets.

Notes to the Financial Statements

FOR THE YEAR ENDED 31 DECEMBER 2015

46

Note 17: Commission Details

The office of the Commission is:

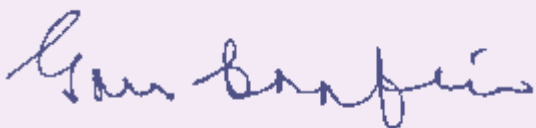
Level 3, 156 Gloucester Street
Sydney, NSW 2000

National Catholic Education Commission Declaration by Commissioners

In the Commissioners opinion:

- (a) There are reasonable grounds to believe that the National Catholic Education Commission is able to pay all its debts, as and when they become due and payable; and
- (b) The financial statements and notes satisfy the requirements of the *Australian Charities and Not-for-profits Commission Act 2012*.

Signed in accordance with subsection 60.15(2) of *Australian Charities and Not-for-profit Commission Regulation 2013*.



.....
The Hon Greg Crafter AO, Chair, NCEC



.....
Mr Stephen Elder OAM, Chair, NCEC Finance Audit and Risk Standing Committee



.....
Mr Ross Fox, Executive Director, NCEC

Dated this **9th** day of **March** 2016



Ernst & Young
121 Marcus Clarke Street
Canberra ACT 2600 Australia
GPO Box 281 Canberra ACT 2601

Tel: +61 2 6267 3888
Fax: +61 2 6246 1500
ey.com/au

Independent auditor's report to the members of National Catholic Education Commission

Report on the financial report

We have audited the accompanying financial report, being a special purpose financial report of National Catholic Education Commission (the 'registered entity'), which comprises the statement of financial position as at 31 December 2015, the statement of comprehensive income, statement of changes in equity and statement of cash flows for the year then ended, notes comprising a summary of significant accounting policies and other explanatory information, and the National Catholic Education Commission declaration.

Bishops' responsibility for the financial report

The Bishops of the registered entity are responsible for the preparation of the financial report and have determined that the basis of preparation described in Note 1 to the financial report is appropriate to meet the requirements of the *Australian Charities and Not-for-Profits Commission Act 2012* and is appropriate to meet the needs of the members.

The Bishops' responsibility also includes such internal controls as the Bishops determine are necessary to enable the preparation of a financial report that is free from material misstatement, whether due to fraud or error.

Auditor's responsibility

Our responsibility is to express an opinion on the financial report based on our audit. We have conducted our audit in accordance with Australian Auditing Standards. Those standards require that we comply with relevant ethical requirements relating to audit engagements and plan and perform the audit to obtain reasonable assurance whether the financial report is free from material misstatement.

An audit involves performing procedures to obtain audit evidence about the amounts and disclosures in the financial report. The procedures selected depend on the auditor's judgment, including the assessment of the risks of material misstatement of the financial report, whether due to fraud or error. In making those risk assessments, the auditor considers internal controls relevant to the preparation of the financial report that gives a true and fair view in order to design audit procedures that are appropriate in the circumstances, but not for the purpose of expressing an opinion on the effectiveness of the registered entity's internal controls. An audit also includes evaluating the appropriateness of accounting policies used and the reasonableness of accounting estimates made by the Bishops, as well as evaluating the overall presentation of the financial report.

We believe that the audit evidence we have obtained is sufficient and appropriate to provide a basis for our audit opinion.

Independence

In conducting our audit we have complied with the independence requirements of the *Australian Charities and Not-for-Profits Commission Act 2012*. We have given to the Bishops of the registered entity a written Auditor's Independence Declaration.

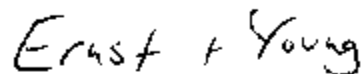
Opinion

In our opinion the financial report of National Catholic Education Commission is in accordance with the *Australian Charities and Not-for-Profits Commission Act 2012*, including:

- a. giving a true and fair view of the registered entity's financial position as at 31 December 2015 and of its performance for the year ended on that date; and
- b. complying with Australian Accounting Standards to the extent described in Note 1, and complying with the *Australian Charities and Not-for-Profits Commission Regulation 2013*.

Basis of accounting

Without modifying our opinion, we draw attention to Note 1 to the financial report, which describes the basis of accounting. The financial report has been prepared for the purpose of fulfilling the Bishops' financial reporting responsibilities under the *Australian Charities and Not-for-Profits Commission Act 2012*. As a result, the financial report may not be suitable for another purpose.



Ernst & Young
Canberra
11 March 2016

Detailed Income and Expenditure Statement

FOR THE YEAR ENDED 31 DECEMBER 2015

50

	2015	2014
	\$	\$
Income		
Bishops conference subsidy	2,568,000	2,528,000
Bishops' NCEC Reserve	200,000	–
Interest	38,412	69,834
Other	2,047	2,362
Total Income	2,808,459	2,600,196
Expenditure		
Annual Leave	59,374	31,847
Audit and accounting fees	12,500	9,550
Bookkeeping	51,435	303
Books, periodicals and subscriptions	11,978	13,098
Cleaning	4,943	–
Contracts	–	60,095
Copying and printing	26,885	21,626
Depreciation	83,355	53,683
Electricity	6,224	3,489
Equipment	8,764	5,018
Gifts	3,035	799
ICT Support	11,542	15,516
IT Consultants	6,863	–
Indoor Plant Hire	856	583
Insurance	6,797	–
Legal Costs	4,429	–
Long Service Leave	43,538	34,672
Loss on disposal of assets	–	2,993
Media	–	76,766
Meetings	451,682	454,122
Minor equipment/consumables	–	255
Office Refurbishment	–	17,243
Postage and freight	4,270	2,897
Projects	212,131	10,475
Rent	144,608	152,304
Repairs and maintenance	1,660	140
Security Shredding and Archiving	4,634	5,356
Shared services	–	5,202
Superannuation	127,821	87,394
Telecommunications	20,083	18,323
Other expenses	579	1,694
Wages	1,411,396	1,193,340
Total Expenditure	2,721,382	2,278,783
Profit for the period	87,077	321,413

Appendices



Appendices

52

A. NCEC terms of reference and statutes

Terms of Reference

1. The National Catholic Education Commission (NCEC) is commissioned by and responsible to the Australian Catholic Bishops Conference (ACBC) through the Bishops Commission for Catholic Education (BCCE) for developing, enunciating and implementing policy at the national level for the Church's work in Catholic schools.
2. Education in Catholic schools shall be the major focus of the NCEC's deliberations and work. NCEC shall maintain active links with other vital aspects of the Church's educational endeavour, particularly in relation to Catholic children attending state and independent schools, and Catholic tertiary education.
3. In fulfilment of its commission from ACBC, NCEC shall:
 - 3.1 give systematic witness to a commitment to Christ and to the truths and values of his Gospel and his Church within contemporary ecclesial, educational, social and political milieux;
 - 3.2 develop and articulate a rationale for the continuing contribution of Catholic schools to the common good, and for the special nature and mission of Catholic schools;
 - 3.3 develop and articulate a rationale for the rights of Catholic parents and their children attending Catholic schools to a just allocation of public monies from the Commonwealth and State Governments to fund their education and to maximise access to Catholic schools by Catholic families;
 - 3.4 build on and enhance the work of State/Territory Catholic Education Commissions, and diocesan and religious order structures and services in Catholic schools, particularly in the areas of Faith Formation and Religious Education, ensuring at all times that the principle of subsidiarity is given proper precedence;
 - 3.5 work to extend, enhance and consolidate collaboration at the national level to enable the Church to respond effectively to emerging national school policies and trends: recurrent, capital and special purpose funding; curriculum (including Religious Education); accountability and governance; school quality; school effectiveness and efficiency; early childhood education; teacher training; teaching and learning standards;
 - 3.6 work towards developing and sustaining a national policy consensus that will promote the most effective application and use of all resources devoted to Catholic school education in Australia;
 - 3.7 monitor trends in educational theory and practice, national and international, and ensure that a Catholic position is declared on issues which are raised or should be raised in the public forum;
 - 3.8 negotiate on behalf of ACBC and BCCE with national political authorities and government instrumentalities;
 - 3.9 collaborate with other national bodies associated with school education;
 - 3.10 act as an organ of communication at the national level on matters pertaining to Catholic schools;
 - 3.11 assemble, maintain, utilise and disseminate data relevant to Catholic schools;
 - 3.12 undertake, support or commission appropriate educational research, particularly through service arrangements with State Catholic Education Offices;
 - 3.13 establish liaison with international educational bodies, Catholic and other, and with experts in education and related fields of potential value to Australian Catholic schools; and
 - 3.14 perform other tasks as requested by BCCE.

Statutes

The Commission

1. The National Catholic Education Commission (NCEC) is commissioned by and responsible to the Australian Catholic Bishops Conference (ACBC) through the Bishops Commission for Catholic Education (BCCE).
2. NCEC shall carry out its functions within the Terms of Reference established or amended by ACBC, and in accordance with these Statutes.
3. NCEC shall report regularly to ACBC through BCCE.
4. NCEC shall consist of sixteen (16) Commissioners. The appointments to be:
 - (a) Presiding honorary Chair
 - (b) Executive Director
 - (c) Two (2) Bishops
 - (d) Eight (8) Chief Executives of State/Territory Catholic Education Commissions, ex officio

- (e) A Congregational member selected by BCCE from three (3) nominations forwarded by Catholic Religious Australia
 - (f) A parent selected by BCCE from a nomination forwarded by each State/Territory based parent organisation
 - (g) Two (2) community members appointed by BCCE.
5. The Chair and the Executive Director shall be appointed by ACBC.
 6. The Executive Director shall be the official spokesperson for NCEC.
 7. Membership of NCEC shall ordinarily be for a period of four (4) years.
 8. Retiring members may be re-appointed, but no member shall serve more than eight (8) consecutive years unless he/she be the Chief Executive Officer of a State or Territory Catholic Education Commission.
 9. Substitutes for members at NCEC meetings shall not be accepted.
 10. Where a member is absent from three (3) consecutive meetings of NCEC without reasonable cause, his/her membership shall be deemed to have lapsed and another person shall be appointed.
 11. In the event of a member of NCEC relinquishing membership for any reason, another person shall be appointed by BCCE to complete the unexpired term in accordance with 4 above.
 12. NCEC shall have a Deputy Chair elected by and from the members of the Commission. The appointment shall be for the term of the Commission.

Meetings

13. NCEC shall hold at least eight (8) ordinary meetings each calendar year.
14. Extraordinary meetings of NCEC shall be called by the Chair, either at his/her own discretion, or on the request of at least six (6) members. In the latter case, the meeting shall be held within one month of receipt of the request. A quorum for extraordinary meetings shall consist of half the members of NCEC plus one.
15. All discussions at NCEC meetings shall be confidential and governed by the usual rules of debate. All members, including the Chair, have a deliberative vote, and the Chair shall also have a casting vote.

16. The minutes of NCEC and its Standing Committees shall be provided to BCCE.
17. The Executive Officer for Faith Formation and Religious Education to be in attendance at Commission meetings.

Committees

18. NCEC shall establish a Standing Committee for Faith Formation and Religious Education. The Standing Committee will be chaired by the Executive Officer for Faith Formation and Religious Education. Members of the Committee will be appointed by BCCE.
19. NCEC may establish other Standing Committees as necessary. NCEC may also establish ad hoc Working Parties.
20. All Standing Committees, either standing or ad hoc, will have approved Terms of Reference and membership, including a defined period of membership.
21. The Executive Director shall be ex officio a member of all Committees and Working Parties established by NCEC.

Finance

22. NCEC shall submit an annual budget for approval by ACBC. It shall also annually submit to ACBC an audited financial statement. Financial statements shall be reviewed regularly by NCEC.
23. Costs of the NCEC Secretariat, NCEC travel, accommodation and other approved expenses incurred in the work of NCEC or its committees will be met from the approved budget.
24. NCEC is authorised to enter into service agreements for general operational expenditures, and to sign contracts for other services within its approved budget.

Dissolution

25. NCEC may be dissolved by a resolution of ACBC. In such circumstance, its records and assets will automatically transfer to ACBC.

Directory of Catholic Education Commissions

54

National Catholic Education Commission

<i>Office address</i>	<i>Postal address</i>
Level 3 156 Gloucester Street Sydney NSW 2000 Tel: (02) 8229 0800	PO Box R1802 Royal Exchange NSW 1225
	www.ncec.catholic.edu.au

Australian Capital Territory

Catholic Education Commission Archdiocese of Canberra and Goulburn	
<i>Office address</i>	<i>Postal address</i>
52-54 Franklin Street Manuka ACT 2603 Tel: (02) 6234 5455	PO Box 3317 Manuka ACT 2603
	www.cg.catholic.edu.au

New South Wales

Catholic Education Commission NSW	
<i>Office address</i>	<i>Postal address</i>
9 th Floor, Polding Centre 133 Liverpool Street Sydney NSW 2000 Tel: (02) 9287 1555	PO Box 20768 World Square NSW 2002
	www.cccsw.catholic.edu.au

Northern Territory

Catholic Education Council of the Northern Territory	
<i>Office address</i>	<i>Postal address</i>
17 Beaton Road Berrimah NT 0828 Tel: (08) 8984 1400	PO Box 219 Berrimah NT 0828
	www.ceont.catholic.edu.au

Queensland

Queensland Catholic Education Commission	
<i>Office address</i>	<i>Postal address</i>
Level 1 143 Edward Street Brisbane QLD 4000 Tel: (07) 3316 5800	GPO Box 2441 Brisbane QLD 4001
	www.qcec.catholic.edu.au





South Australia

South Australian Commission for Catholic Schools

<i>Office address</i>	<i>Postal address</i>
116 George Street Thebarton SA 5031 Tel: (08) 8301 6600	PO Box 179 Torrensville Plaza SA 5031
	www.cesa.catholic.edu.au

Tasmania

Tasmanian Catholic Education Commission

<i>Office address</i>	<i>Postal address</i>
5 Emmett Place New Town TAS 7008 Tel: (03) 6210 8888	PO Box 102 North Hobart TAS 7002
	www.catholic.tas.edu.au

Victoria

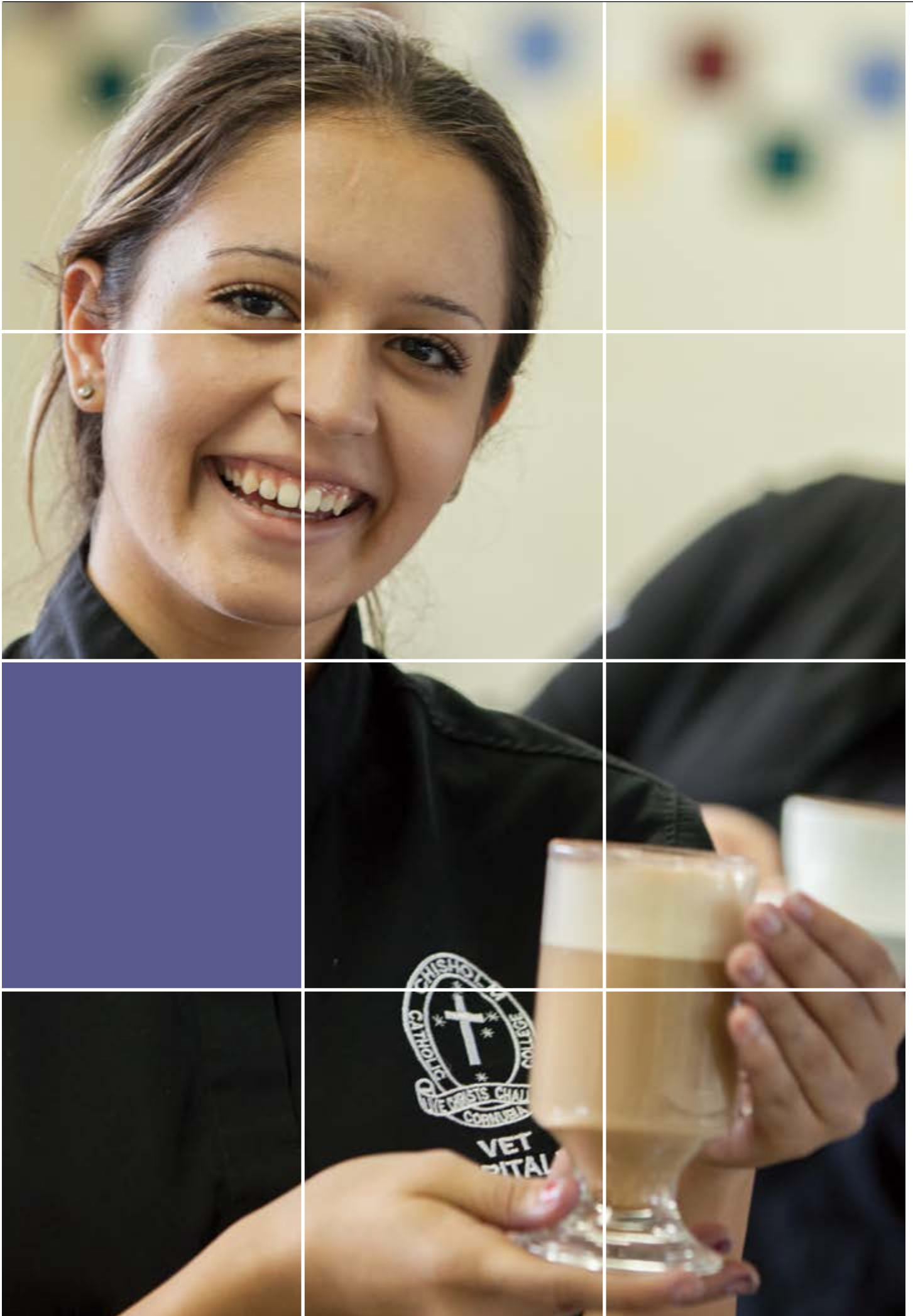
Catholic Education Commission of Victoria Ltd

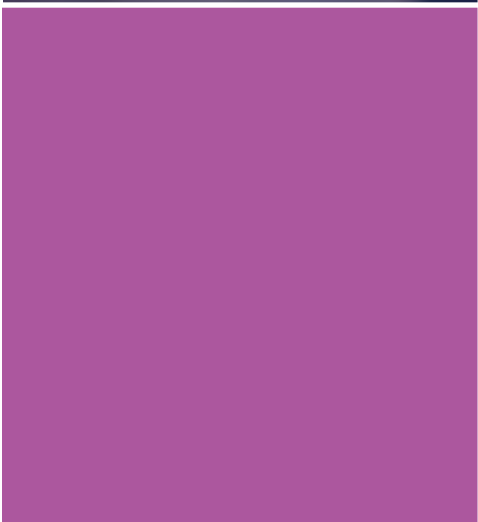
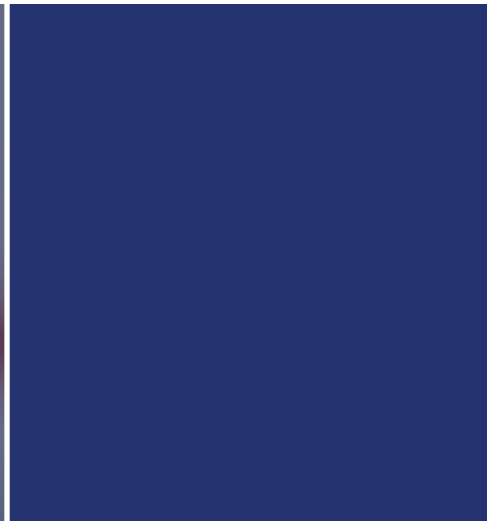
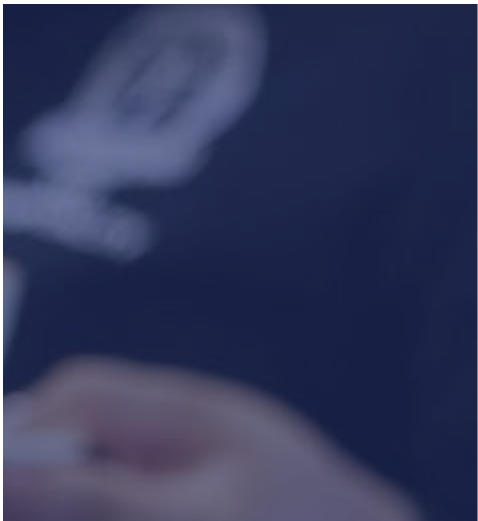
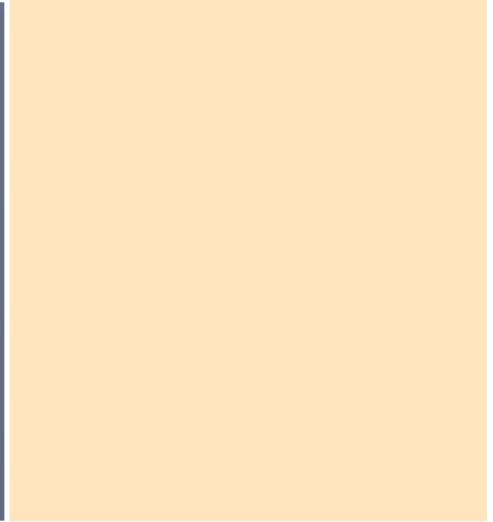
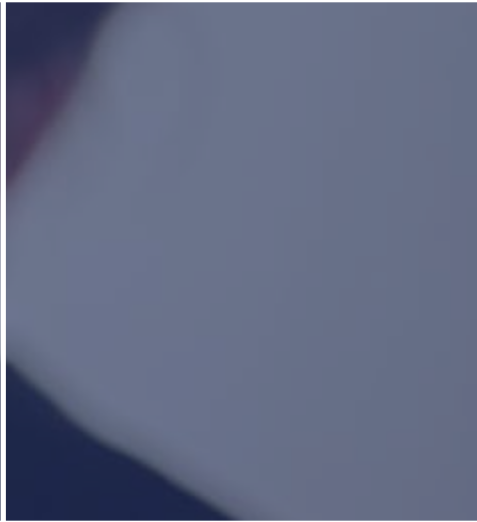
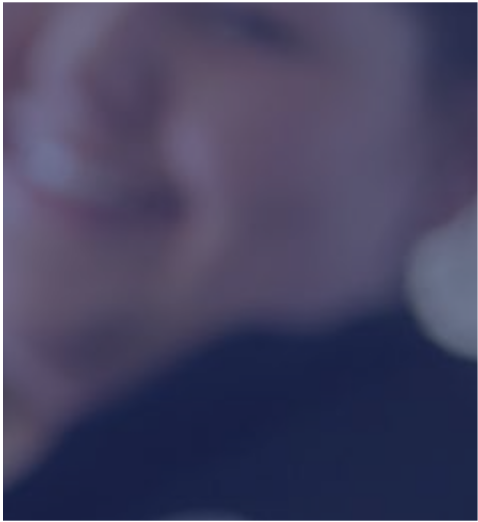
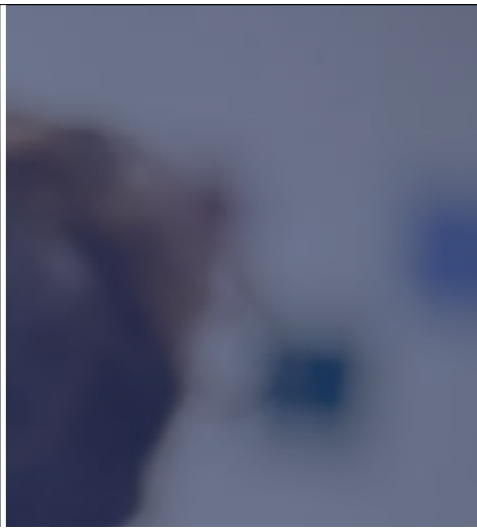
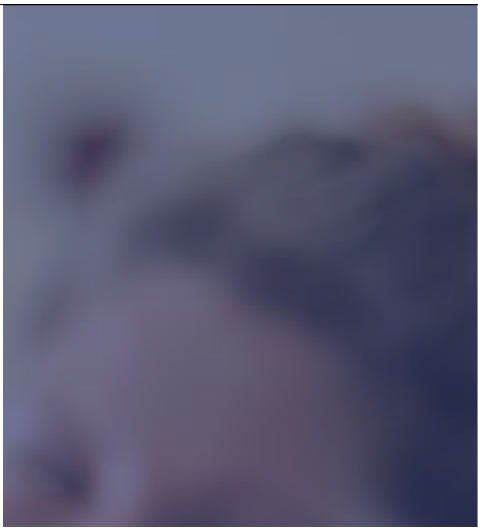
<i>Office address</i>	<i>Postal address</i>
228 Victoria Parade East Melbourne VIC 3002 Tel: (03) 9267 0228	PO Box 3 East Melbourne VIC 3002
	www.cecv.catholic.edu.au

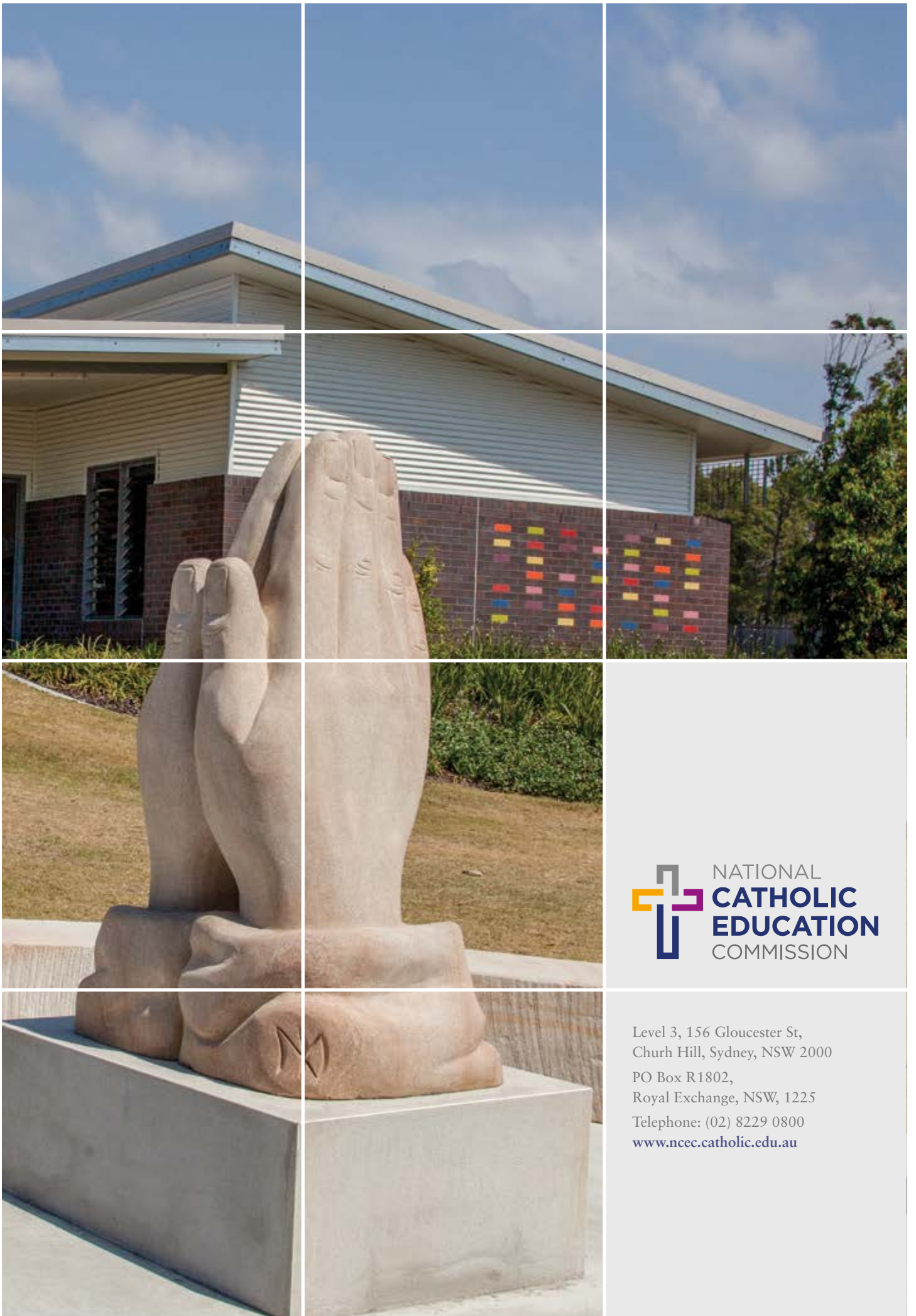
Western Australia

Catholic Education Commission of Western Australia

<i>Office address</i>	<i>Postal address</i>
50 Ruislip Street Leederville WA 6007 Tel: (08) 6380 5200	PO Box 198 Leederville WA 6903
	www.ceo.wa.edu.au







NATIONAL
**CATHOLIC
EDUCATION**
COMMISSION

Level 3, 156 Gloucester St,
Churh Hill, Sydney, NSW 2000
PO Box R1802,
Royal Exchange, NSW, 1225
Telephone: (02) 8229 0800
www.ncec.catholic.edu.au